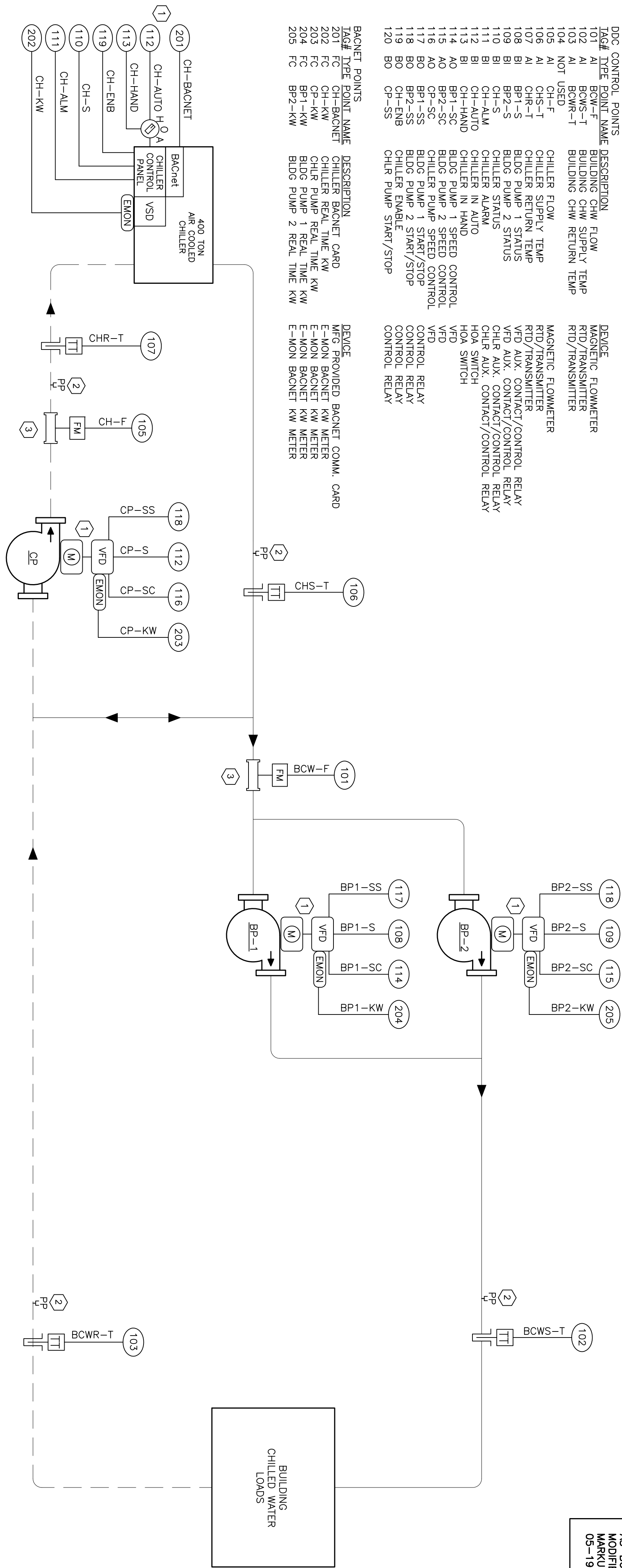
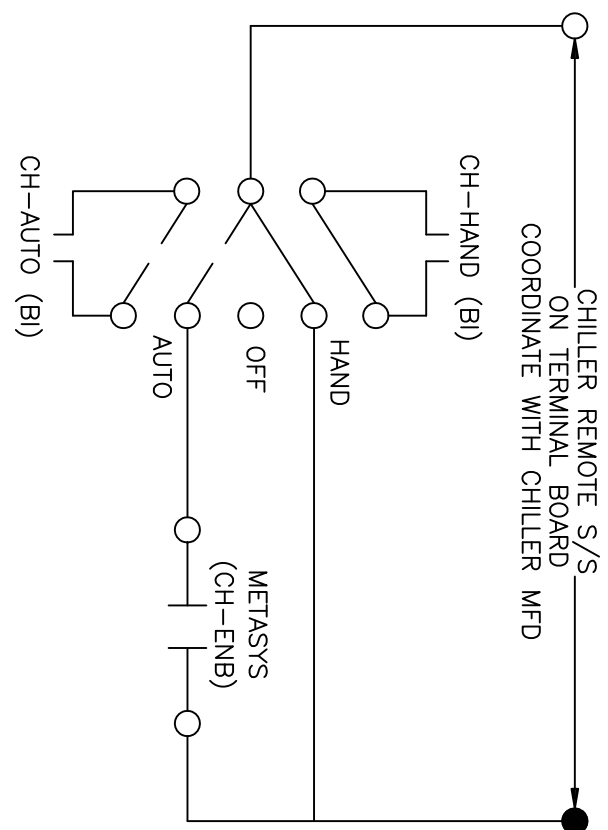


DDC CONTROL POINTS		DEVICE	
TAG#	TYPE POINT NAME	DESCRIPTION	DDC CONTROL POINT NAME
102	AI	CHILLER FLOW	RID/ FLOWMETER
103	AI	BUILDING CHW SUPPLY TEMP	RID/ TRANSMITTER
104	NOT USED	BUILDING CHW RETURN TEMP	RID/ TRANSMITTER
106	AI	CHILLER FLOW	MAGNETIC FLOWMETER
107	AI	CHILLER SUPPLY TEMP	RID/ TRANSMITTER
108	AI	CHILLER RETURN TEMP	RID/ TRANSMITTER
109	BI	BLDG PUMP 1 STATUS	VFD AUX. CONTACT/CONTROL RELAY
110	BI	CHILLER STATUS	RID/ TRANSMITTER
111	BI	CHILLER START/STOP	CHILLER AUX. CONTACT/CONTROL RELAY
112	BI	CHILLER ALARM	CHILLER AUX. CONTACT/CONTROL RELAY
113	BI	CH-AUTO	NOA SWITCH
114	BI	CH-BAND	NOA SWITCH
115	AO	BUILDING CHW SPEED CONTROL	VFD
116	AO	BLDG PUMP 2 SPEED CONTROL	VFD
117	BO	CHILLER PUMP SPEED CONTROL	CONTROL RELAY
118	BO	BLDG PUMP 1 START/STOP	CONTROL RELAY
119	BO	CHILLER PUMP START/STOP	CONTROL RELAY
120	BO	CHILLER ENABLE	CONTROL RELAY
		CHLR PUMP START/STOP	CONTROL RELAY

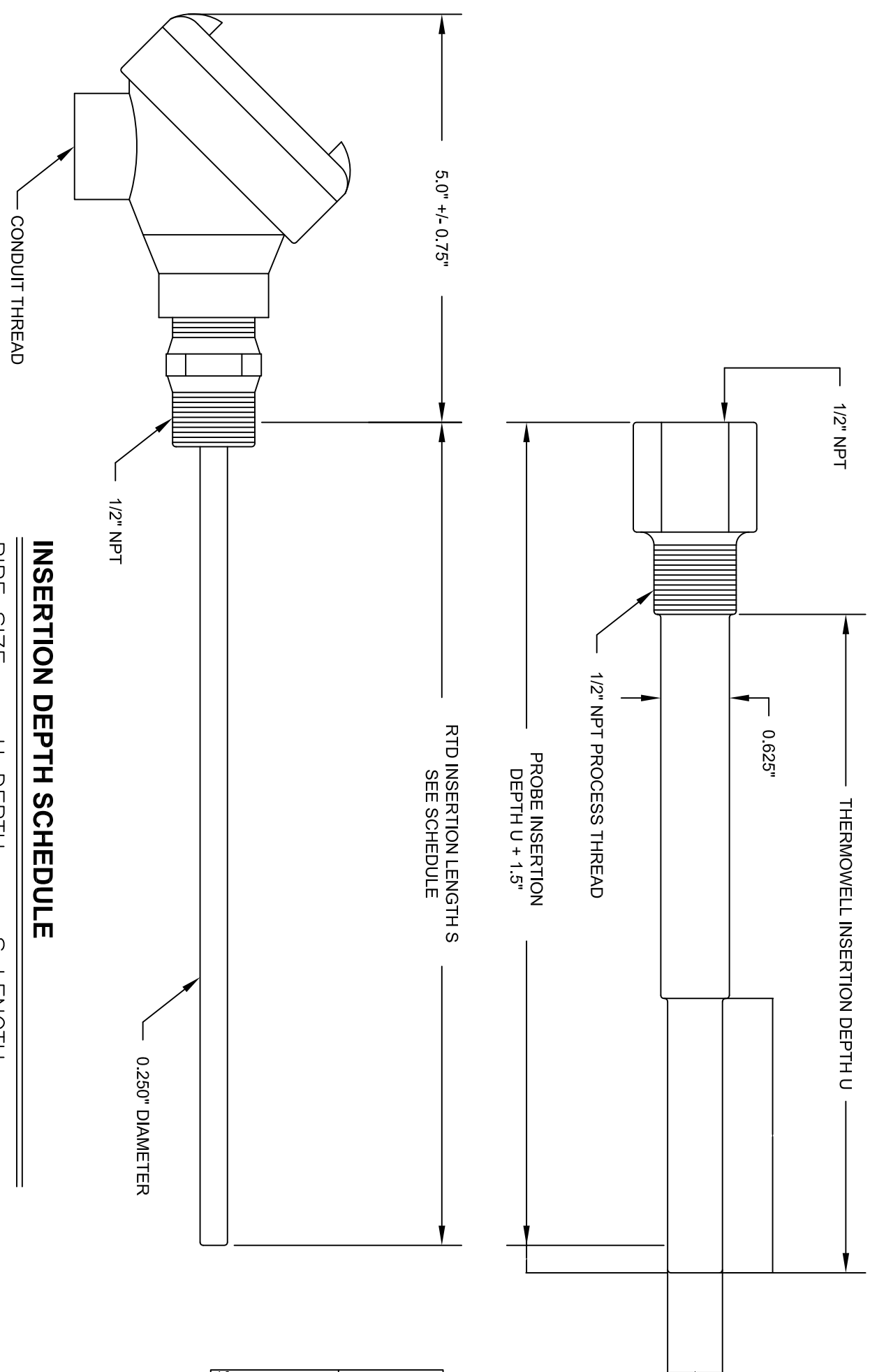
BACKUP POINTS		DEVICE	
TAG#	TYPE POINT NAME	DESCRIPTION	DDC CONTROL POINT NAME
201	FC	CHILLER PUMP CARD	PROLOGUED BACKUP COMM. CARD
202	FC	CHILLER PUMP REAL TIME KW	E-MON BACKUP KW METER
203	FC	CHLR PUMP 1 REAL TIME KW	E-MON BACKUP KW METER
204	FC	BLDG PUMP 2 REAL TIME KW	E-MON BACKUP KW METER
205	FC	BLDG PUMP 1 REAL TIME KW	E-MON BACKUP KW METER



AS-BUILT DRAWINGS HAVE BEEN
MODIFIED PER CONTRACTOR
MARKUPS RECEIVED ON
05-19-14

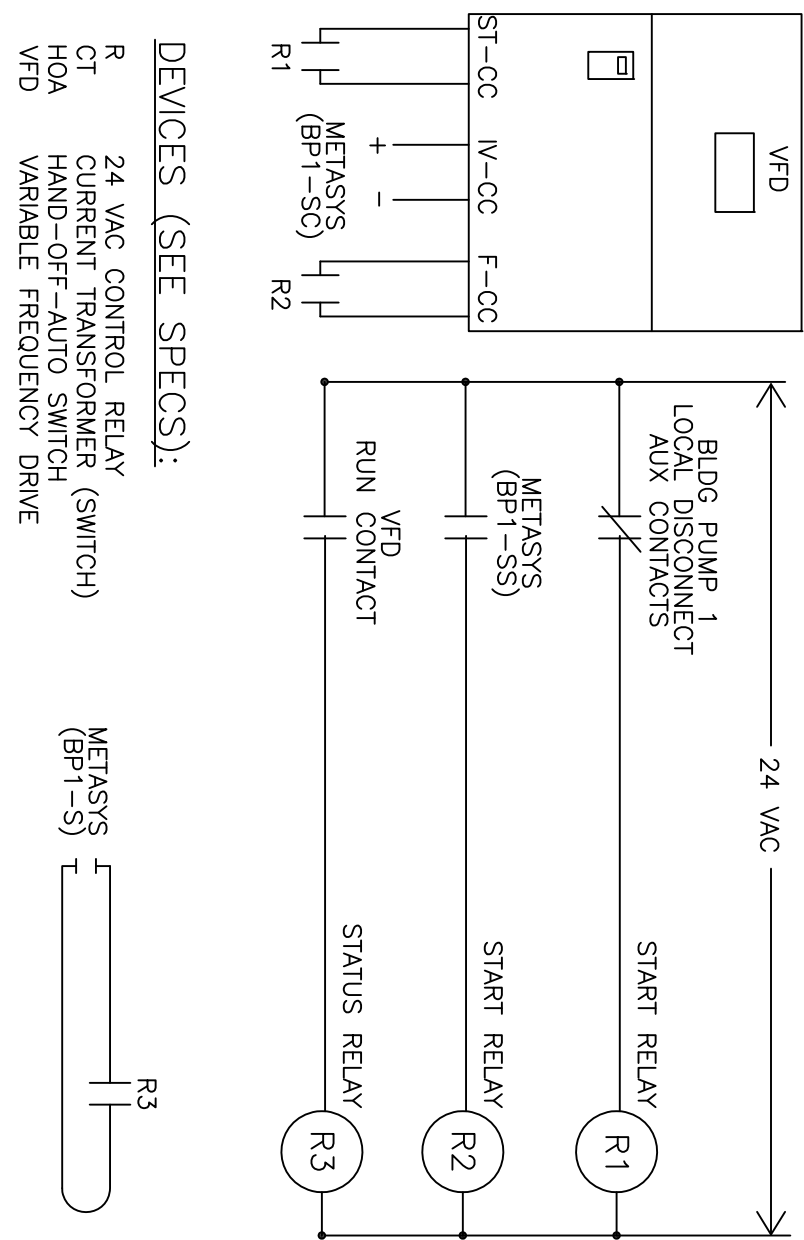
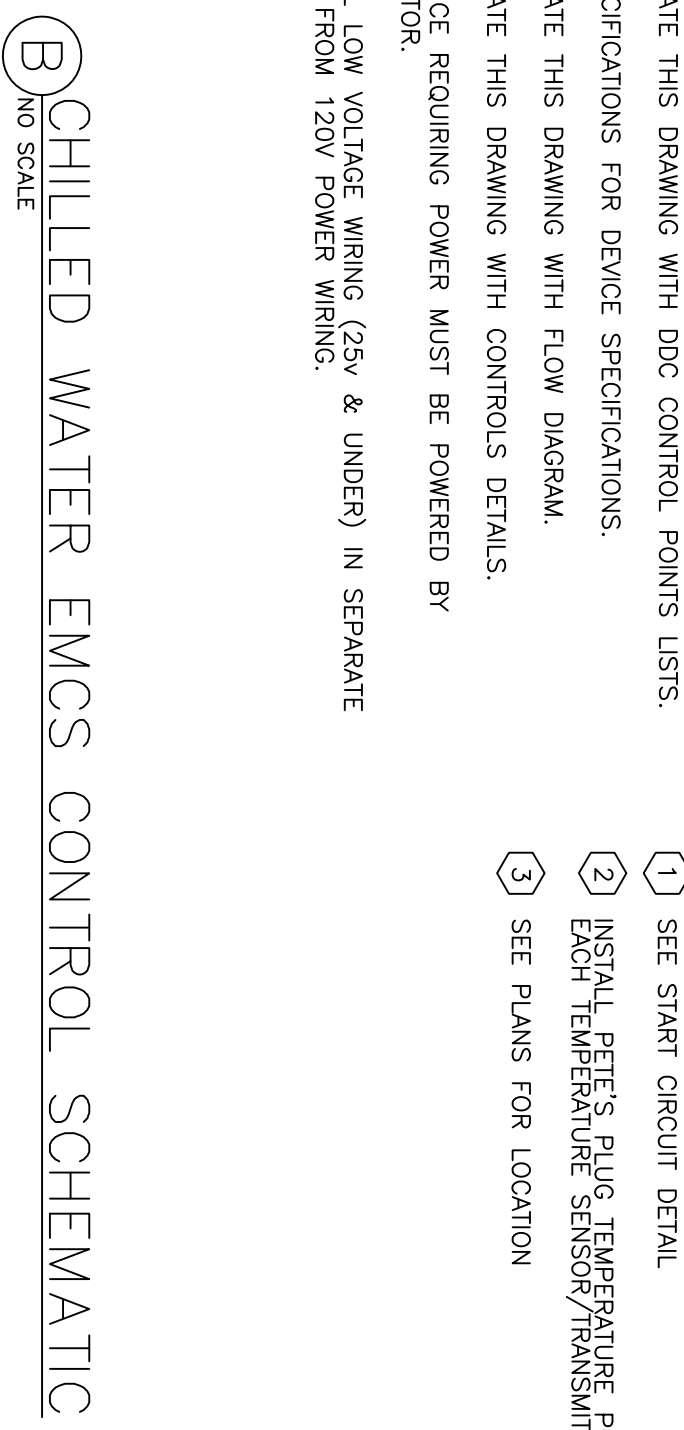


NOTES: H-O-A SWITCH FURNISHED BY CONTRACTOR.
CHILLER H-O-A START DETAIL

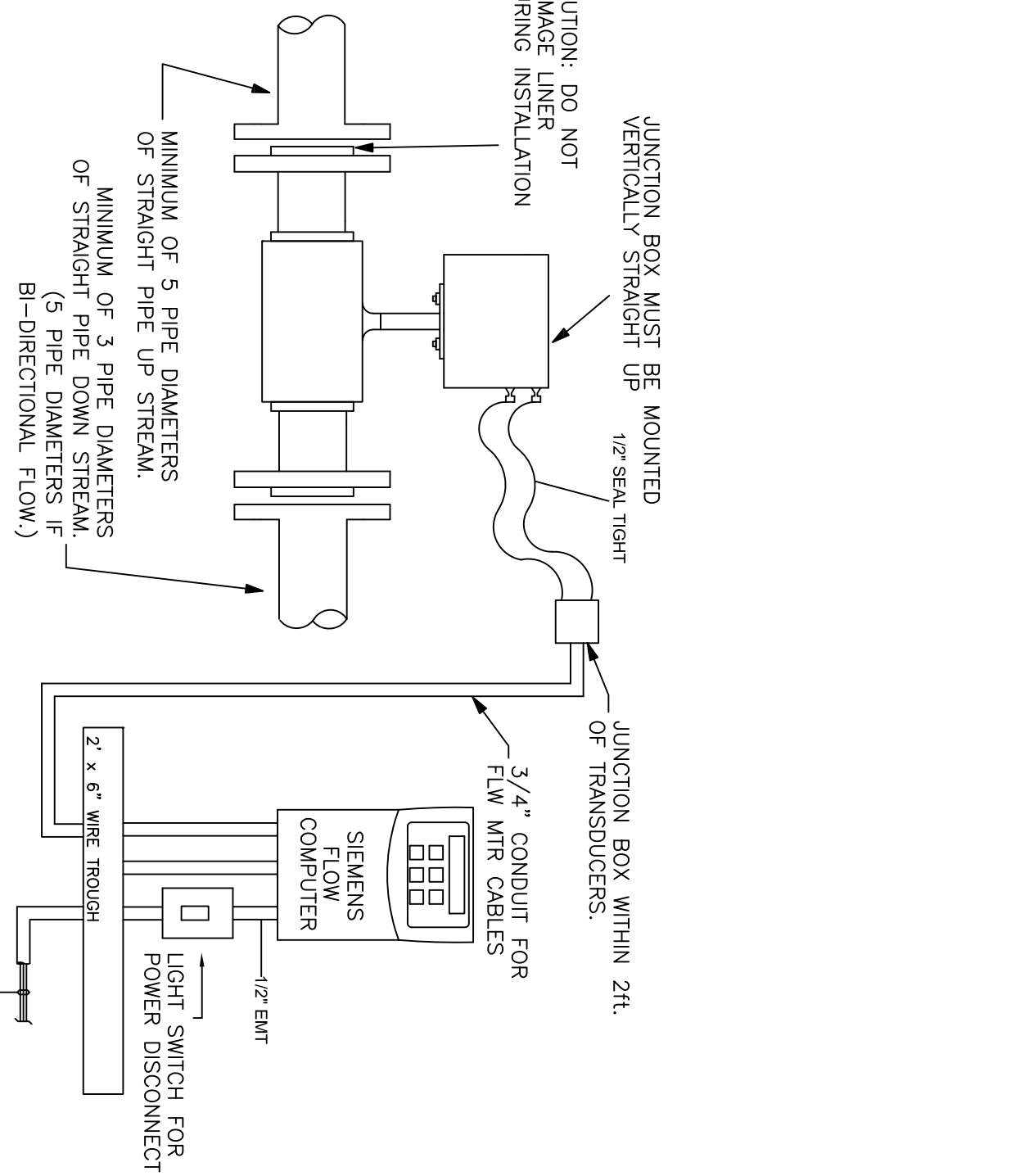
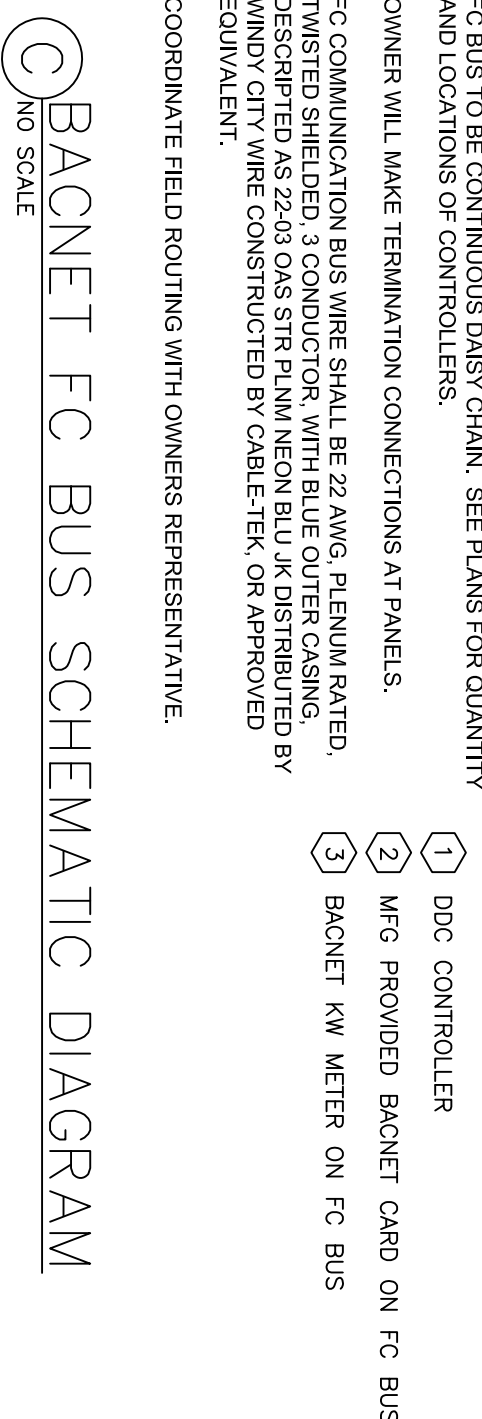


PIPE SIZE	U DEPTH	S LENGTH
4" & DOWN	2"	3.5"
5"	2.5"	4"
6"	3"	4.5"
8"	4"	5.5"

FOR PIPE SMALLER THAN 4" BUSHING
AND/OR TEE WILL BE REQUIRED.

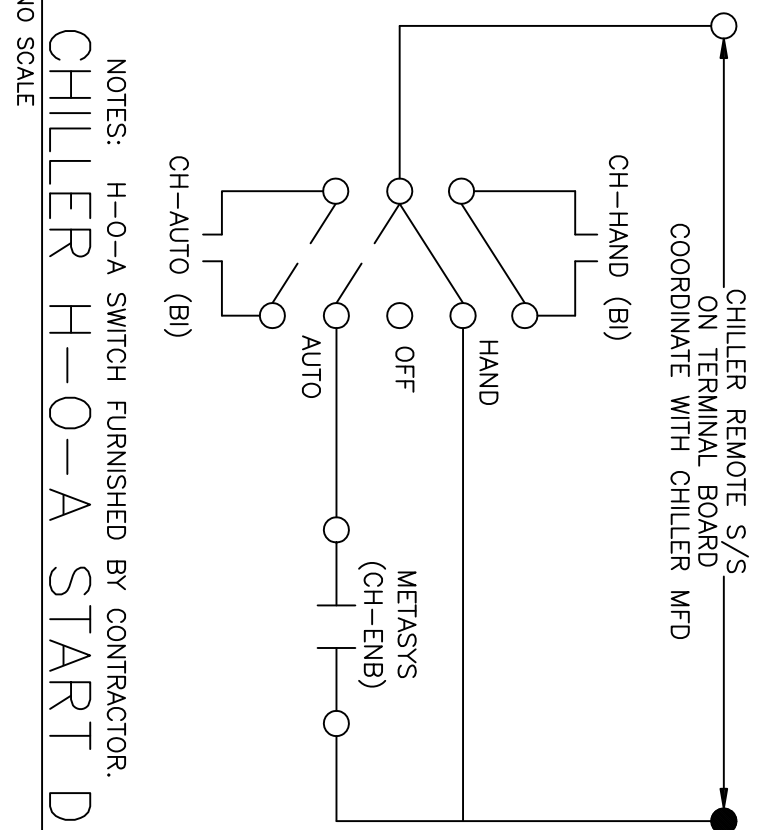


TYPICAL: BP-1,2

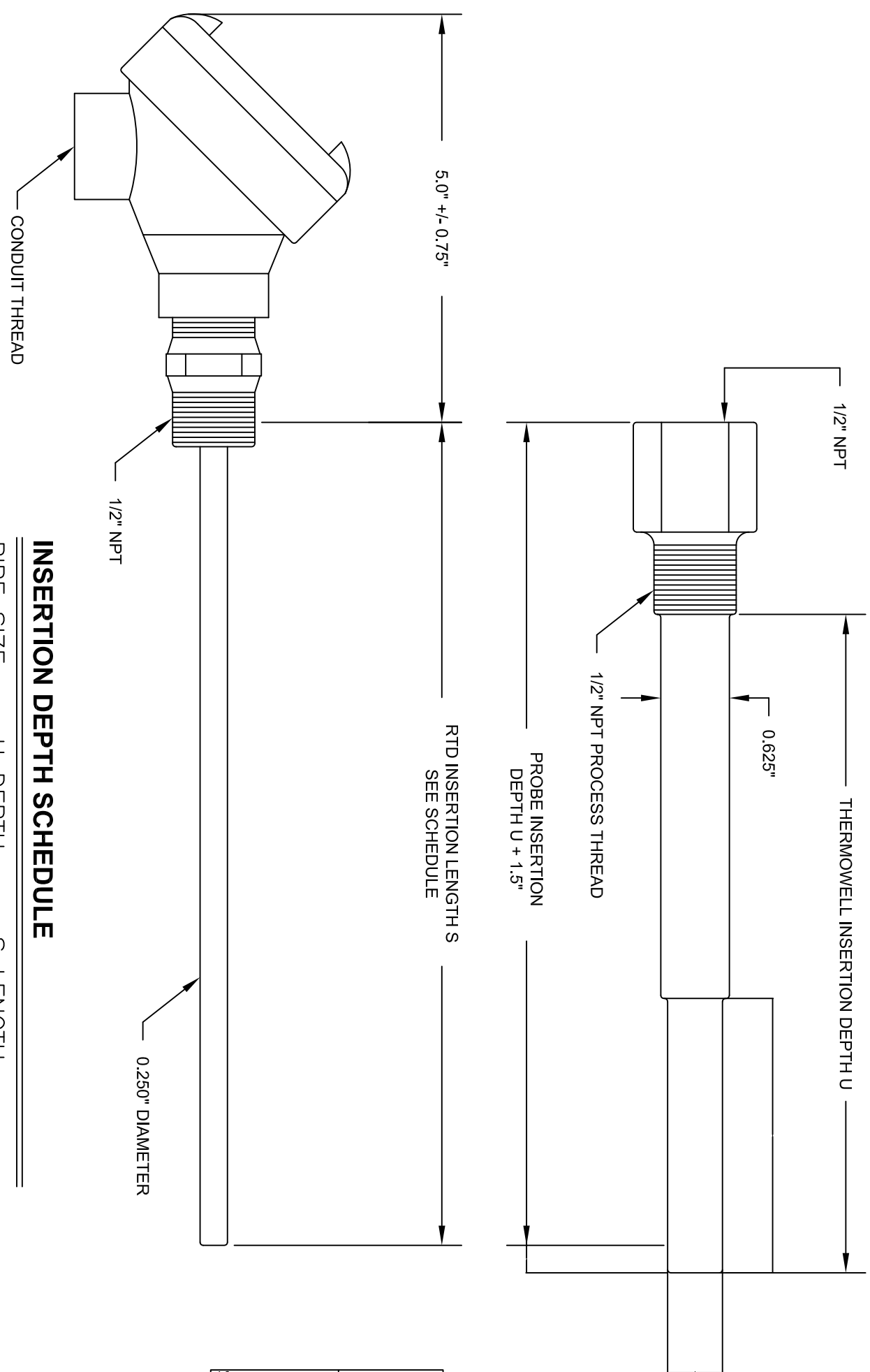


NOTES

1. FLOW METER SHALL BE INSTALLED BY CONTRACTOR AFTER INSTALLATION. THE OWNER SHALL PERFORM ANY NECESSARY CALIBRATIONS. AFTER CALIBRATION, THE CONTRACTOR SHALL INSULATE THE ENTIRE ASSEMBLY.
2. FLOW METER SHALL BE INSTALLED IN ACCORDANCE TO MFG. INSTALLATION PROCEDURE.

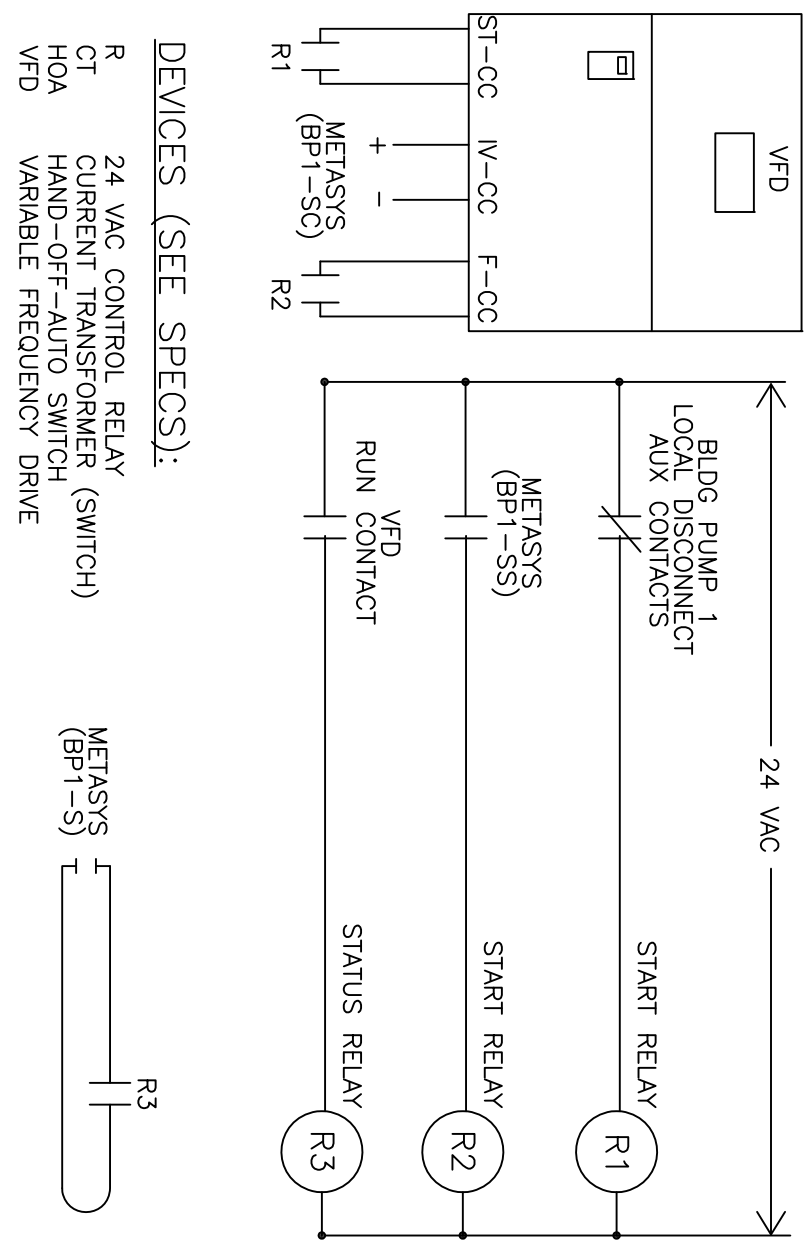
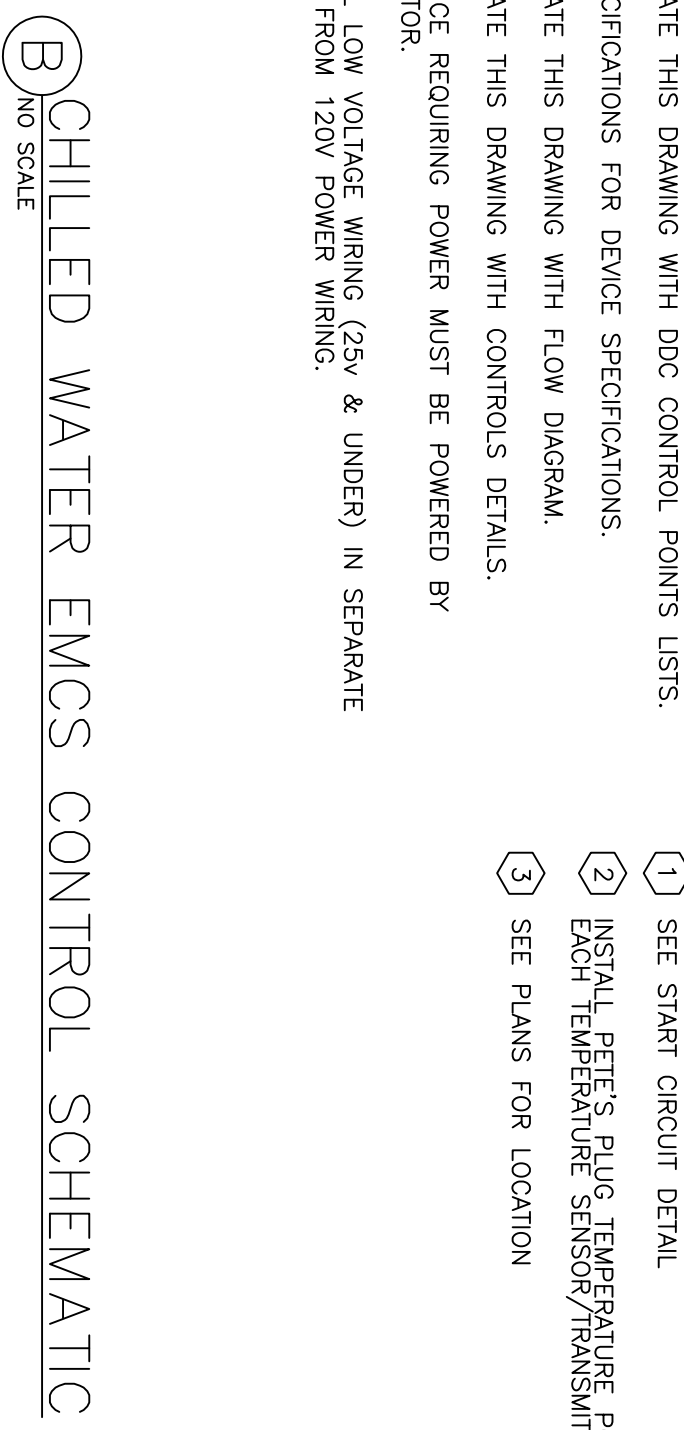


ETAIL

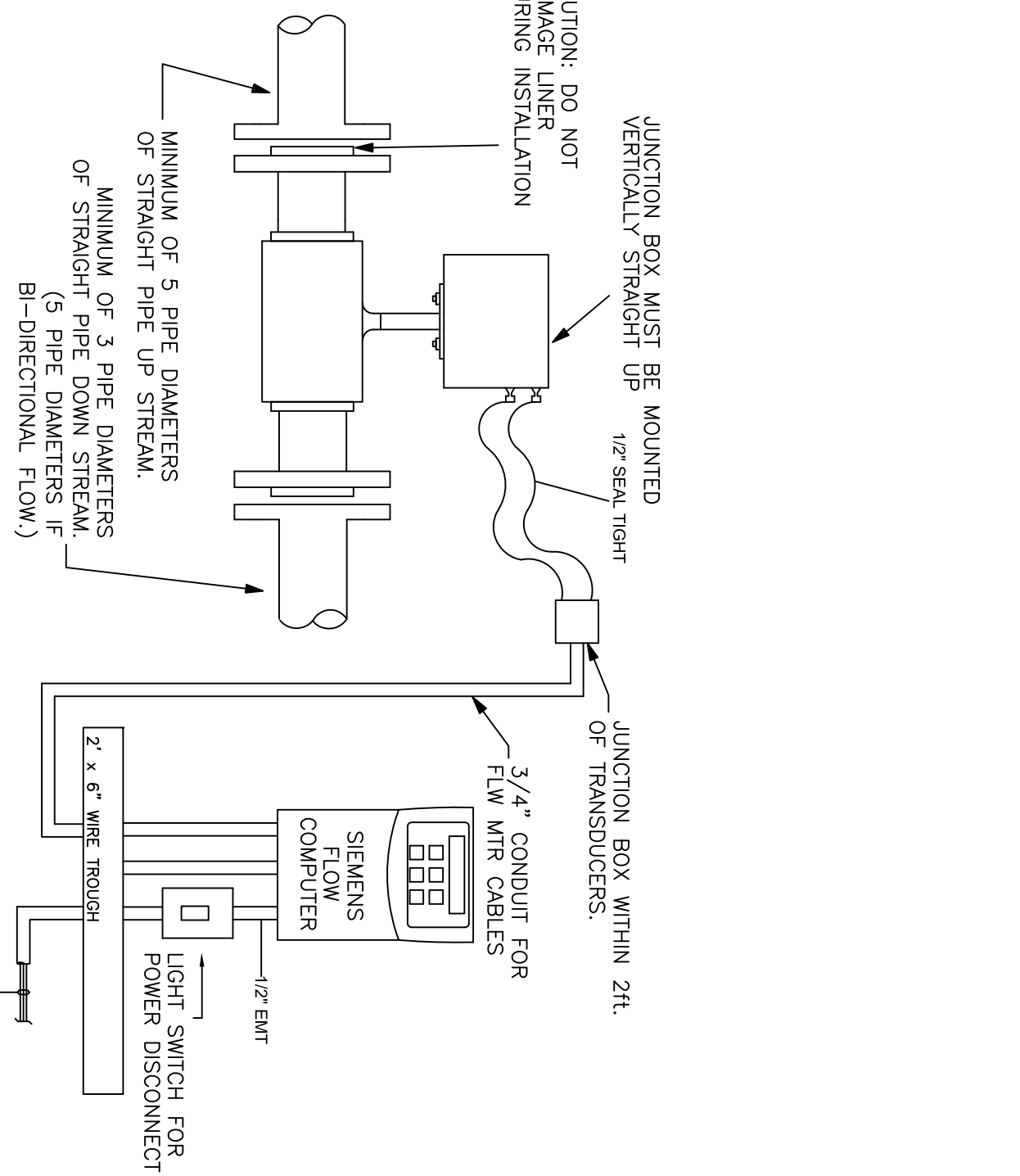
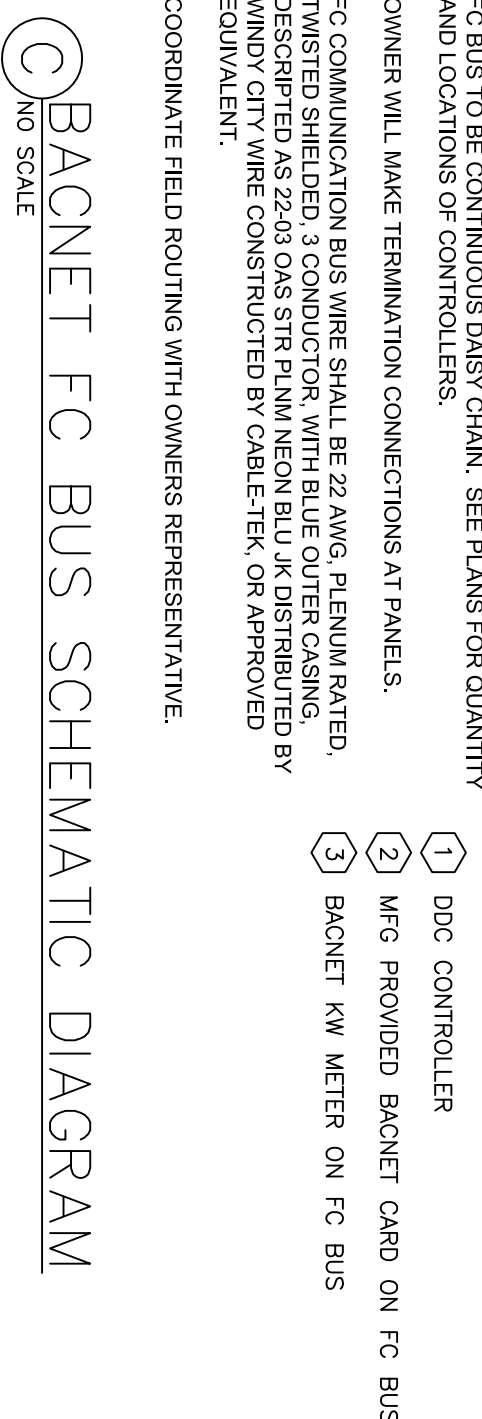


PIPE SIZE	U DEPTH	S LENGTH
4" & DOWN	2"	3.5"
5"	2.5"	4"
6"	3"	4.5"
8"	4"	5.5"

FOR PIPE SMALLER THAN 4" BUSHING
AND/OR TEE WILL BE REQUIRED.



TYPICAL: BP-1,2



NOTES

1. FLOW METER SHALL BE INSTALLED BY CONTRACTOR AFTER INSTALLATION. THE OWNER SHALL PERFORM ANY NECESSARY CALIBRATIONS. AFTER CALIBRATION, THE CONTRACTOR SHALL INSULATE THE ENTIRE ASSEMBLY.
2. FLOW METER SHALL BE INSTALLED IN ACCORDANCE TO MFG. INSTALLATION PROCEDURE.