

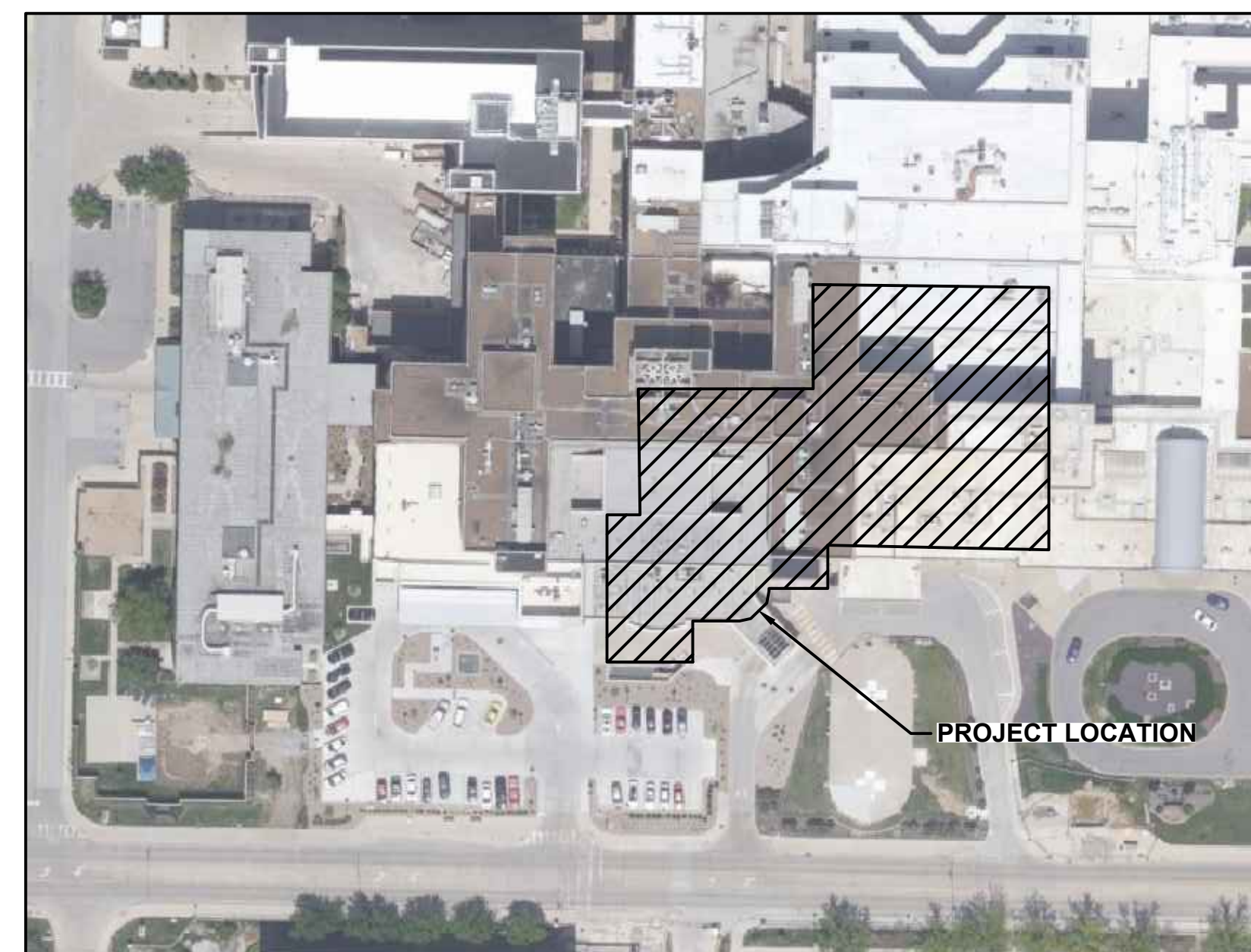


# CCA & TH EMERGENCY POWER MODIFICATIONS

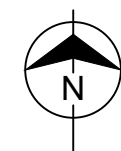
UNIVERSITY OF MISSOURI  
COLUMBIA, MISSOURI  
MU PROJECT NUMBER CP210961  
BMCD #128966

FOR THE CURATORS OF THE UNIVERSITY OF MISSOURI

ISSUED FOR BID  
JULY 9, 2021



KEYPLAN  
N.T.S.



### DRAWING INDEX

<b>GENERAL</b>	
G-001	COVER SHEET
G-101	CONTRACTOR ACCESS PLANS
<b>ELECTRICAL</b>	
E-001	ELECTRICAL LEGEND
E-101	GROUND FLOOR ELECTRICAL PLAN - PHASE 1
E-102	GROUND FLOOR ELECTRICAL PLAN - PHASE 2
E-103	SITE ELECTRICAL PLAN - PHASE 2
E-104	GROUND FLOOR ELECTRICAL PLAN - PHASE 3
E-105	CCA GROUND FLOOR ELECTRICAL PLAN - PHASE 3
E-106	FIRST FLOOR ELECTRICAL PLAN - PHASE 3
E-107	SECOND FLOOR ELECTRICAL PLAN - PHASE 3
E-108	THIRD FLOOR ELECTRICAL PLAN - PHASE 3
E-501	ELECTRICAL RISER DIAGRAM - PHASE 1
E-502	ELECTRICAL RISER DIAGRAM - PHASE 2
E-503	ELECTRICAL RISER DIAGRAM - PHASE 3
E-601	ELECTRICAL SCHEDULES
E-602	ELECTRICAL SCHEDULES
E-701	ELECTRICAL DETAILS
E-702	ELECTRICAL DETAILS

### ADOPTED CODES:

- INTERNATIONAL BUILDING CODE - 2018
- INTERNATIONAL PLUMBING CODE - 2018
- INTERNATIONAL MECHANICAL CODE - 2018
- INTERNATIONAL EXISTING BUILDING CODE - 2018 (LEVEL 1 & LEVEL 2 ALTERATIONS ONLY WITH PRE-APPROVAL OF AHJ)
- INTERNATIONAL FIRE CODE - 2018
- INTERNATIONAL FUEL GAS CODE - 2018
- NATIONAL ELECTRIC CODE / NFPA 70 - 2011 & 2017 (WHICHEVER IS MOST STRINGENT)
- NFPA 110 STANDARD FOR EMERGENCY AND STANDBY POWER SYSTEMS - 2010 & 2016 (WHICHEVER IS MOST STRINGENT)
- NFPA 101 LIFE SAFETY CODE - 2012
- NFPA 99 STANDARD FOR HEALTH CARE FACILITIES - 2012
- NFPA 90A INSTALLATION OF AIR CONDITIONING AND VENTILATING SYSTEMS - 2012 & 2018 (WHICHEVER IS MOST STRINGENT)
- NFPA 72 NATIONAL FIRE ALARM CODE - 2010 & 2016 (WHICHEVER IS MOST STRINGENT)
- NFPA 51B STANDARD FOR FIRE PREVENTION DURING WELDING, CUTTING, AND OTHER HOT WORK - 2014
- ASME A17.1 SAFETY CODE FOR ELEVATORS AND ESCALATORS (PER STATE OF MISSOURI)
- AMERICANS WITH DISABILITIES ACT - STANDARDS FOR ACCESSIBLE DESIGN 2010
- FACILITY GUIDELINES INSTITUTE - 2018

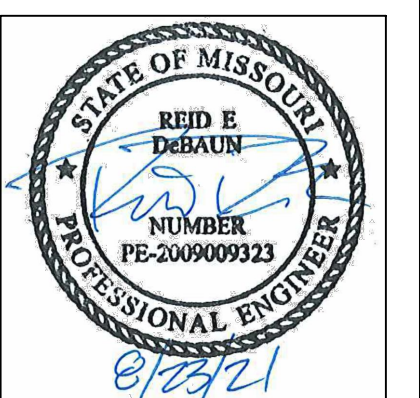
### CERTIFICATION:



ELECTRICAL

"I HEREBY CERTIFY THESE DRAWINGS AND/OR SPECIFICATIONS HAVE BEEN PREPARED BY ME, OR UNDER MY SUPERVISION. I FURTHER CERTIFY THAT TO THE BEST OF MY KNOWLEDGE THESE DRAWINGS AND/OR SPECIFICATIONS ARE AS REQUIRED BY AND IN COMPLIANCE WITH THE BUILDING CODES OF THE UNIVERSITY OF MISSOURI"

SIGNATURE:



### SPECIAL INSPECTIONS:

PER THE INTERNATIONAL BUILDING CODE (IBC) 2018 SECTION 1705 THE FOLLOWING SPECIAL INSPECTIONS ARE REQUIRED FOR THIS PROJECT:

- IBC SECTION 1705.12.6: VERIFY ANCHORAGE OF ELECTRICAL EQUIPMENT FOR EMERGENCY AND STANDBY POWER SYSTEMS IN STRUCTURES. VERIFY CLEARANCE AROUND FIRE PROTECTION SPRINKLER SYSTEM DROPS AND SPRIGS TO ADJACENT STRUCTURAL, ELECTRICAL, AND MECHANICAL COMPONENTS. MINIMUM OF 3-INCH CLEARANCE SHALL BE PROVIDED. FREQUENCY: PERIODIC
- IBC SECTION 1705.17.1, 1705.17.2: VERIFY PENETRATIONS THROUGH FIRE BARRIERS. FIRE BARRIER RATING SHALL BE MAINTAINED AROUND PENETRATION. FREQUENCY: PERIODIC

### DEFERRED SUBMITTALS:

- SEISMIC BRACING.

no.	date	by	ckd	description
0	07/09/21	JMC	RED	ISSUED FOR BID
1	08/20/21	JMC	RED	ADDENDUM #4



9400 WARD PARKWAY  
KANSAS CITY, MO 64114  
816-333-9400  
LICENSEE NO. 000165

# G-001