

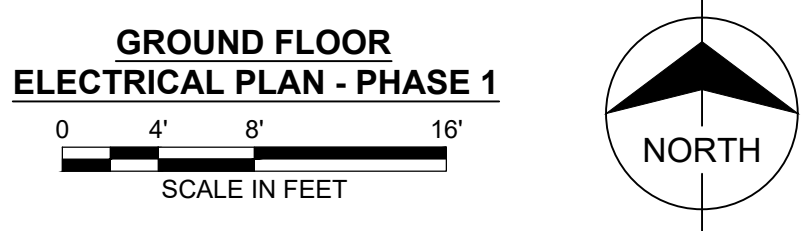
no.	date	by	ckd	description
0	07/09/21	JMC	RED	ISSUED FOR BID
1	08/20/21	JMC	RED	ADDENDUM #3

GENERAL NOTES:

- REFER TO SHEET E-001 FOR PROJECT GENERAL NOTES, SYMBOLS, AND ABBREVIATIONS.
- REFER TO SHEET E-501 FOR PHASE 1 PROJECT ONE-LINE DIAGRAM.
- CLOSELY COORDINATE ALL SHUTDOWNS WITH THE OWNER PRIOR TO BEGINNING WORK. OBTAIN OWNER APPROVAL NO LESS THAN 10 BUSINESS DAYS IN ADVANCE FOR ALL SHUTDOWNS AND DISRUPTIONS AND FOLLOW ALL OWNER GUIDELINES AND PROCEDURES. REFER TO DIVISION 1 SPECIFICATION.
- FIELD VERIFY ALL EXISTING CONDITIONS.
- ALL ELECTRICAL EQUIPMENT SHOWN HALF TONE IS EXISTING TO REMAIN, UNO.
- FURNISH AND INSTALL CONCRETE EQUIPMENT PADS FOR ALL FLOOR MOUNTED EQUIPMENT. SEE SPECIFICATION SECTION 260529 - HANGERS AND SUPPORTS FOR ELECTRICAL SYSTEMS FOR REQUIREMENTS.
- REFER TO SPEC SECTION 260553 FOR RACEWAY IDENTIFICATION REQUIREMENTS.
- NEW PENETRATIONS THROUGH FIRE-RATED FLOOR AND WALL ASSEMBLIES SHALL BE FIRESTOPPED WITH A UL LISTED ASSEMBLY BY A CERTIFIED FIRESTOPPING CONTRACTOR. SYSTEM SHALL MATCH THE FIRE RATING OF THE ASSEMBLY TO BE PENETRATED.
- PERFORM CONSTRUCTION RENOVATION MAINTENANCE RISK ASSESSMENT (CRMRA) AND INTERIM LIFE SAFETY MEASURES (ILSM) ANALYSIS PER OWNER'S GUIDELINES AT EACH LOCATION WHERE WORK WILL OCCUR. REFER TO DIVISION 1 SPECIFICATIONS FOR DETAILS. DO NOT PROCEED WITH WORK WITHOUT OWNERS APPROVAL.

KEYED NOTES: (#)

- (3) EXISTING LIGHTING INVERTERS TO BE RELOCATED. ADEQUATE LIGHTING SHALL BE MAINTAINED IN THESE AREAS WHILE EQUIPMENT IS RELOCATED. REFERENCE KEYED NOTE #2.
 - 1KW INVERTER POWERED BY SDCCP1-39 SERVES SELECTED LIGHTS IN GS06 AND GS07.
 - 1KW INVERTER POWERED BY LSH2-2 SERVES ALL LIGHTS IN GS04.
 - 1.6KW INVERTER POWERED BY SDCCP1 SERVES ALL LIGHTS IN GS01.
- RELOCATED LIGHTING INVERTERS, REFERENCE KEYED NOTE #1. EXISTING CIRCUITING TO BE EXTENDED TO THIS LOCATION. MAINTAIN EXISTING CONTROLS INCLUDING LIGHTING RELAY ALLOWING NORMAL POWER LIGHTS TO BE CONTROLLED WITH EMERGENCY POWERED LIGHTS IN GS06 AND GS07.
- REMOVE ALL EXISTING CONDUCTORS AND CONDUITS BACK TO THE SOURCE AS DETAILED ON E-501 AND DEMOLISH EXISTING PULLBOX.
- REMOVE EXISTING BRANCH CIRCUIT (CONDUIT AND WIRE) BACK TO SOURCE, AND SPLICE TO REMAINING CONDUCTORS SERVING AC/UC IN EXISTING JUNCTION BOX WITH 2 #8, 1#8 IN 0.75" C.
- PROVIDE THREE (3) NEW 20A/1P CIRCUIT BREAKERS IN EXISTING PANEL FOR NEW BRANCH CIRCUITS TO VAV, LIGHTS, AND RECEPTACLES.
- REMOVE EXISTING BRANCH CIRCUIT (CONDUIT AND WIRE) BACK TO SOURCE, AND SPLICE REMAINING CONDUCTORS SERVING VAV IN EXISTING JUNCTION BOX WITH 2 #8, 1#8 IN 0.75" C.
- REMOVE EXISTING BRANCH CIRCUIT (CONDUIT AND WIRE) BACK TO SOURCE, AND SPLICE REMAINING CONDUCTORS SERVING LIGHTS IN EXISTING JUNCTION BOX WITH 2 #8, 1#8 IN 0.75" C.
- REMOVE EXISTING BRANCH CIRCUIT (CONDUIT AND WIRE) BACK TO SOURCE, AND SPLICE REMAINING CONDUCTORS SERVING RECEPTACLES IN EXISTING JUNCTION BOX WITH 2 #8, 1#8 IN 0.75" C.
- REMOVE EXISTING BRANCH CIRCUIT (CONDUIT AND WIRE) BACK TO SOURCE AND TERMINATE NEW BRANCH CIRCUIT CONDUCTORS TO EXISTING FIRE ALARM PRE-ACTION PANEL WITH 2 #8, 1#8 IN 0.75" C. TERMINATE SUPPLY SIDE OF BRANCH CIRCUIT ON EXISTING SPARE 20A CIRCUIT BREAKER.
- REMOVE EXISTING BRANCH CIRCUIT (CONDUIT AND WIRE) BACK TO SOURCE AND TERMINATE NEW BRANCH CIRCUIT CONDUCTORS TO EXISTING JOCKEY PUMP WITH 3 #4, 1#8 IN 1" C.
- PROVIDE 70A FUSES IN EXISTING 100A SWITCH FOR NEW BRANCH CIRCUIT TO JOCKEY PUMP. PROVIDE 30A FUSES IN EXISTING 60A SWITCH FOR NEW BRANCH CIRCUIT TO AC/UCU.
- CONTRACTOR SHALL REMOVE EXISTING PULLBOX, AND ALL ASSOCIATED CONDUCTORS AND RACEWAYS BACK TO THE SOURCE.
- CONTRACTOR SHALL RE-CIRCUIT ALL EXISTING FEEDERS FROM EXISTING PANELS GL-4, GL-5, AND GL-6 TO NEW PANEL CD1. SEE PANEL SCHEDULE FOR ADDITIONAL INFORMATION. EXISTING PANEL INTERIORS TO BE REMOVED AND ENCLOSURE TO BE USED AS JUNCTION BOX. REMOVE AND REPLACE EXISTING PANEL COVERS WITH BLANK PAINT GRIP STEEL COVER AND PAINT TO MATCH WALL. COORDINATE FINAL COLOR SELECTION WITH OWNER.
- CONTRACTOR SHALL MAINTAIN 3'-0" PATHWAY THROUGH AREAWAY.
- REMOVE EXISTING SHEETMETAL DIVIDER IN PULLBOX.
- REMOVE EXISTING CONDUCTORS SERVING VAV IN EXISTING JUNCTION BOX.
- SPLICE EXISTING FEEDERS IN EXISTING JUNCTION BOX.
- CONTRACTOR SHALL PROVIDE DRIP PANS FOR ALL EXISTING PIPING ABOVE NEW ELECTRICAL EQUIPMENT INSTALLATIONS.
- HATCHED AREA IS EXTREMELY CONGESTED WITH EXISTING UTILITIES. WORK DONE IN THIS CORRIDOR SHALL BE DONE DURING NIGHT HOURS.
- CUT ABANDONED CONDUITS FLUSH WITH FLOOR AND FILL WITH GROUT. PROVIDE 6" CONCRETE PAD FOR NEW TRANSFORMER PER SPECIFICATIONS.
- UPDATE NAMEPLATES AND GRAPHICS ON SWITCHGEAR AND REMOTE CONTROL CABINET TO INDICATE SPARE AND/OR NEW FEEDER CONNECTIONS. COORDINATE REQUIREMENTS WITH SWITCHGEAR MANUFACTURER.
- PANEL CD1 OUTAGES SHALL BE LIMITED TO 4 HOURS:
 - PROVIDE TEMPORARY NORMAL POWER SERVICE FROM NEW CIRCUIT BREAKER IN GE13A CHILLER SUBSTATION TO NEW CD1 PANEL. SEE RISER DIAGRAMS FOR ADDITIONAL INFORMATION.
 - CUT EXISTING CD1 FEEDERS OVER TO NEW PANEL INDIVIDUALLY, MINIMIZING SYSTEM OUTAGES.
 - INSTALL PERMANENT CD1 CONNECTION TO ATS-CD1 AND REMOVE TEMPORARY SERVICE FROM CHILLER SUBSTATION.
- PIPE INSULATION IN THIS AREA HAS BEEN IDENTIFIED TO CONTAIN ASBESTOS. CONTRACTOR SHALL COORDINATE WITH OWNERS REPRESENTATIVE IF PROPOSED CONSTRUCTION WILL DISTURB EXISTING INSTALLATIONS.
- FINAL LOCATION OF TRANSFORMERS AND DISCONNECTS ASSUMED TO BE WITHIN OUTLINED AREA. CONFIRM FINAL LOCATION WITH OWNER PRIOR TO INSTALLATION. PROVIDE UNISTRUT SUPPORT FOR DISCONNECTS AS REQUIRED.



CONDUIT	SERVICE TYPE	DESTINATION	CONDUIT	SERVICE TYPE	DESTINATION
1	SPARE	N/A	28	CRITICAL POWER	GL5
2	SPARE	N/A	29	CRITICAL POWER	GL4
3	SPARE	N/A	30	CRITICAL POWER	GL4
4	SPARE	N/A	31	CRITICAL POWER	ELD
5	NORMAL POWER	ATS-ECDP1	32	CRITICAL POWER	ELD
6	NORMAL POWER	ATS-ECDP1	33	SPARE	N/A
7	SPARE	N/A	34	SPARE	N/A
8	SPARE	N/A	35	NORMAL POWER	ATS-EDP2
9	SPARE	N/A	36	NORMAL POWER	ATS-EDP2
10	SPARE	N/A	37	EQUIPMENT POWER	EPD1
11	SPARE	N/A	38	EQUIPMENT POWER	EPD1
12	SPARE	N/A	39	NORMAL POWER	P1
13	SPARE	N/A	40	NORMAL POWER	P1
14	SPARE	N/A	41	NORMAL POWER	ATS-EQP
15	SPARE	N/A	42	NORMAL POWER	ATS-EQP
16	SPARE	N/A	43	SPARE	N/A
17	SPARE	N/A	44	SPARE	N/A
18	SPARE	N/A	45	SPARE	N/A
19	SPARE	N/A	46	SPARE	N/A
20	SPARE	N/A	47	NORMAL POWER	ATS-CD1
21	SPARE	N/A	48	NORMAL POWER	ATS-CD1
22	SPARE	N/A	49	SPARE	N/A
23	SPARE	N/A	50	SPARE	N/A
24	SPARE	N/A	51	NORMAL POWER	ATS-RAD
25	SPARE	N/A	52	NORMAL POWER	ATS-RAD
26	SPARE	N/A	53	NORMAL POWER	ATS-CD2
27	CRITICAL POWER	GL6	54	NORMAL POWER	ATS-CD2

PB-DB301 CONDUIT SCHEDULE - EXISTING

CONDUIT	SERVICE TYPE	DESTINATION	CONDUIT	SERVICE TYPE	DESTINATION
1	SPARE	N/A	28	CRITICAL POWER	GL5
2	SPARE	N/A	29	CRITICAL POWER	GL4
3	SPARE	N/A	30	CRITICAL POWER	GL4
4	SPARE	N/A	31	CRITICAL POWER	ELD
5	NORMAL POWER	ATS-ECDP1	32	CRITICAL POWER	ELD
6	NORMAL POWER	ATS-ECDP1	33	SPARE	N/A
7	SPARE	N/A	34	SPARE	N/A
8	SPARE	N/A	35	NORMAL POWER	ATS-EDP2
9	SPARE	N/A	36	NORMAL POWER	ATS-EDP2
10	SPARE	N/A	37	EQUIPMENT POWER	EPD1
11	SPARE	N/A	38	EQUIPMENT POWER	EPD1
12	SPARE	N/A	39	NORMAL POWER	P1
13	SPARE	N/A	40	NORMAL POWER	P1
14	SPARE	N/A	41	NORMAL POWER	ATS-EQP
15	SPARE	N/A	42	NORMAL POWER	ATS-EQP
16	SPARE	N/A	43	SPARE	N/A
17	SPARE	N/A	44	SPARE	N/A
18	SPARE	N/A	45	SPARE	N/A
19	SPARE	N/A	46	SPARE	N/A
20	SPARE	N/A	47	NORMAL POWER	ATS-CD1
21	SPARE	N/A	48	NORMAL POWER	ATS-CD1
22	SPARE	N/A	49	SPARE	N/A
23	SPARE	N/A	50	SPARE	N/A
24	SPARE	N/A	51	NORMAL POWER	ATS-RAD
25	SPARE	N/A	52	NORMAL POWER	ATS-RAD
26	SPARE	N/A	53	NORMAL POWER	ATS-CD2
27	CRITICAL POWER	GL6	54	NORMAL POWER	ATS-CD2

DEMOLITION LEGEND

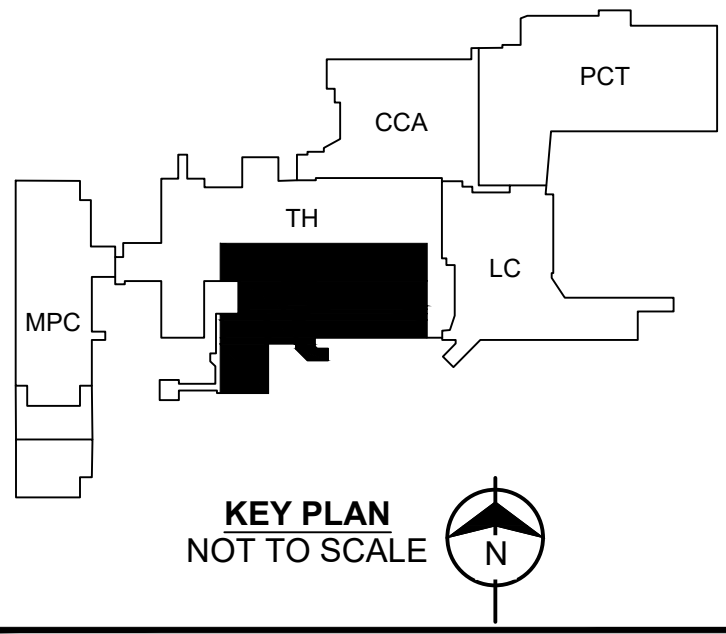
DISCONNECT AND REMOVE ELECTRICAL EQUIPMENT, CONCRETE PADS, CONDUIT, GROUT IN ABANDONED FLOOR CONDUITS, SUPPORTS, AND CONDUCTORS BACK TO SOURCE. COORDINATE DEMOLITION WITH INSTALLATION OF NEW ELECTRICAL EQUIPMENT. MAINTAIN SERVICE TO DOWNSTREAM EQUIPMENT. COORDINATE ALL SHUTDOWNS WITH OWNER.

SYMBOL LEGEND

CABLE FILLED CONDUIT SPARE

REFER TO PB-DB301 CABLE SCHEDULE

**SECTION A-A
PULLBOX PB-DB301 SECTION - EXISTING**
NOT TO SCALE



9400 WARD PARKWAY
KANSAS CITY, MO 64114
816-333-9400
LICENSEE NO. 000165

date	11/20/2020	detailed	J. CHASE
designed	R. DEBAUN	checked	R. DEBAUN



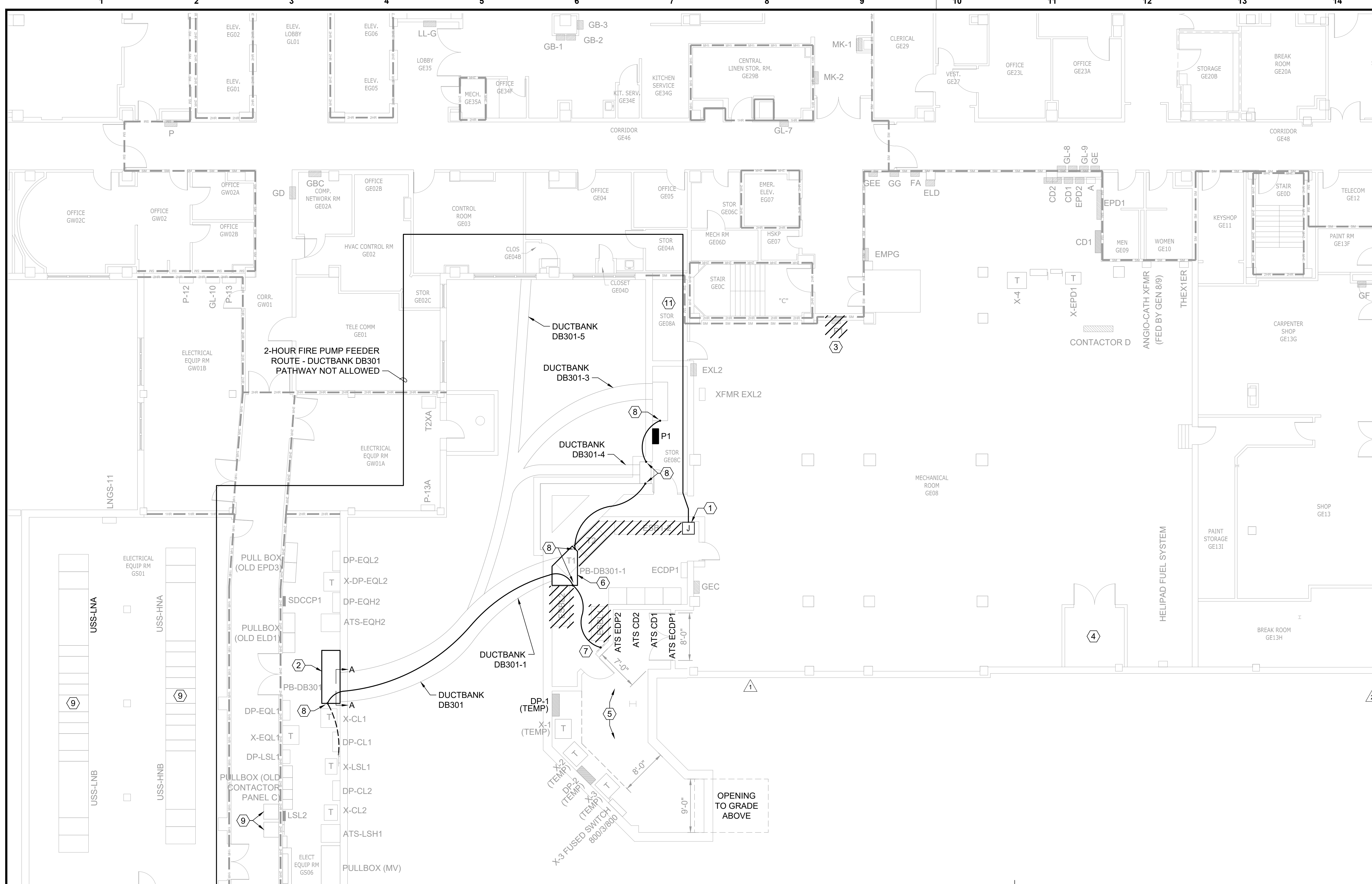
UNIVERSITY HOSPITAL
UNIVERSITY OF MISSOURI HEALTH CARE
COLUMBIA, MISSOURI

**CCA & TH EMERGENCY
POWER MODIFICATIONS**
GROUND FLOOR
ELECTRICAL PLAN - PHASE 1

project	128966	contract	CP210961
drawing		rev.	
sheet	E-101	of	1
file	128966 E-101.DWG	sheets	



REID E. DEBAUN
PROFESSIONAL ENGINEER
LICENSE NO. PE-200909323

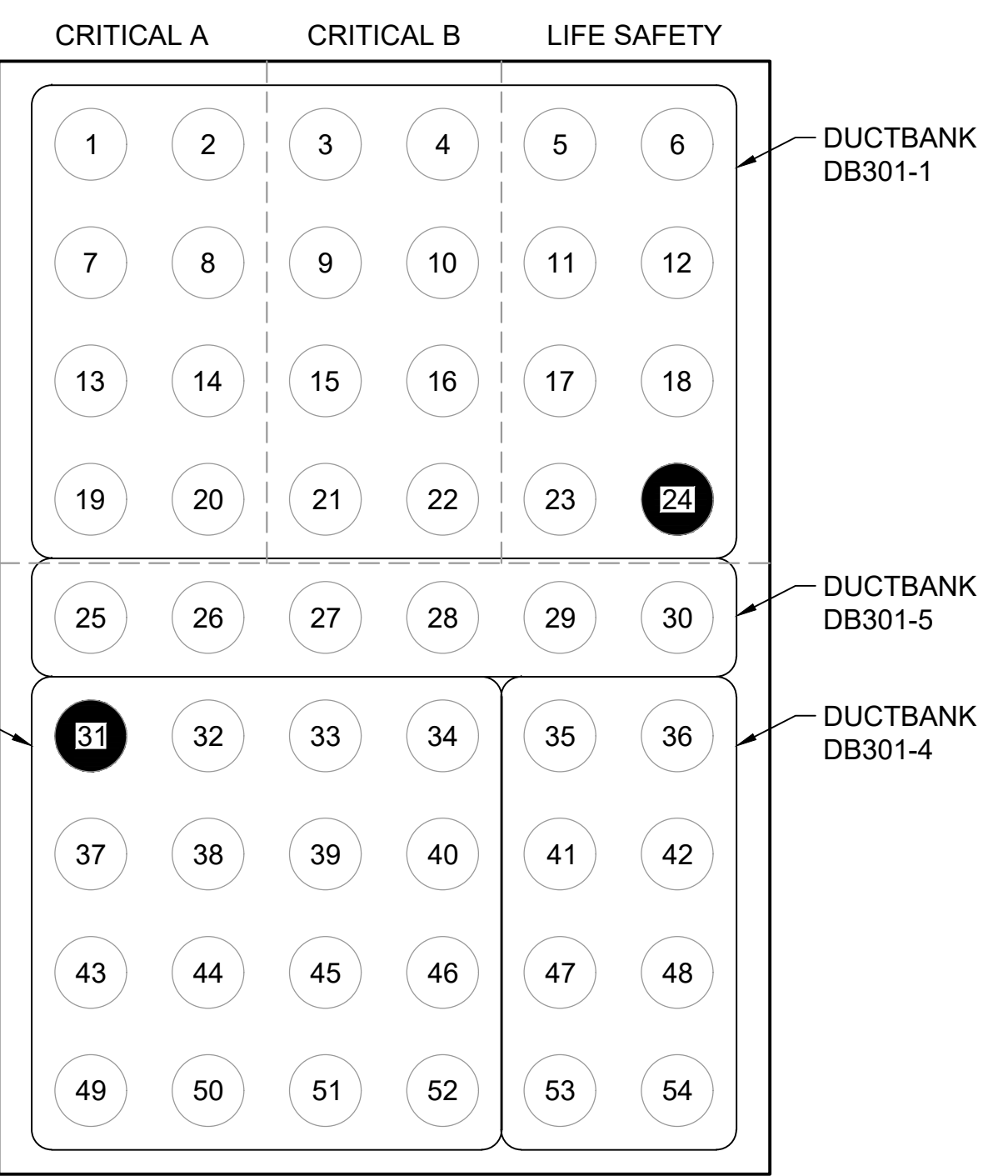
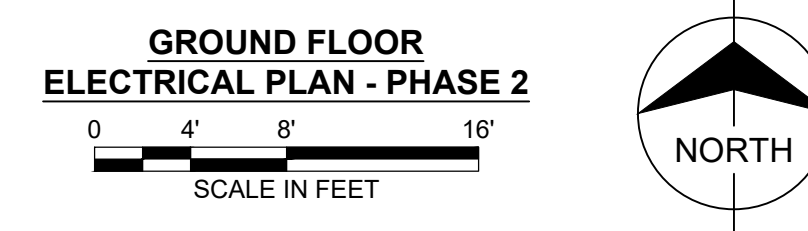


- GENERAL NOTES:**
- REFER TO SHEET E-001 FOR PROJECT GENERAL NOTES, SYMBOLS, AND ABBREVIATIONS.
 - REFER TO SHEET E-502 FOR PHASE 2 PROJECT ONE-LINE DIAGRAM.
 - CLOSELY COORDINATE ALL SHUTDOWNS WITH THE OWNER PRIOR TO BEGINNING WORK. OBTAIN OWNER APPROVAL NO LESS THAN 10 BUSINESS DAYS IN ADVANCE FOR ALL SHUTDOWNS AND DISRUPTIONS AND FOLLOW ALL OWNER GUIDELINES AND PROCEDURES. REFER TO DIVISION 1 SPECIFICATION.
 - FIELD VERIFY ALL EXISTING CONDITIONS.
 - ALL ELECTRICAL EQUIPMENT SHOWN HALF TONE IS EXISTING TO REMAIN, UNLESS NOTED OTHERWISE.
 - FURNISH AND INSTALL CONCRETE EQUIPMENT PADS FOR ALL FLOOR MOUNTED EQUIPMENT. SEE SPECIFICATION 'SECTION 260529 - HANGERS AND SUPPORTS FOR ELECTRICAL SYSTEMS' FOR REQUIREMENTS.
 - REFER TO SPEC SECTION 260553 FOR RACEWAY IDENTIFICATION REQUIREMENTS.
 - NEW PENETRATIONS THROUGH FIRE-RATED FLOOR AND WALL ASSEMBLIES SHALL BE FIRESTOPPED WITH A UL LISTED ASSEMBLY BY A CERTIFIED FIRESTOPPING CONTRACTOR. SYSTEM SHALL MATCH THE FIRE RATING OF THE ASSEMBLY TO BE PENETRATED.
 - PERFORM CONSTRUCTION RENOVATION MAINTENANCE RISK ASSESSMENT (CRMRA) AND INTERIM LIFE SAFETY MEASURES (ILSM) ANALYSIS PER OWNER'S GUIDELINES AT EACH LOCATION WHERE WORK WILL OCCUR. REFER TO DIVISION 1 SPECIFICATIONS FOR DETAILS. DO NOT PROCEED WITH WORK WITHOUT OWNER'S APPROVAL.

- KEYED NOTES: (#)**
- SPLICE NEW FEEDER FOR FIRE PUMP IN NEW JUNCTION BOX. SEE RISER DIAGRAM, SHEET E-502 FOR ADDITIONAL INFORMATION.
 - PROVIDE NEW PULLBOX PB-DB301 AS DETAILED ON E-701. BOND EXISTING BARE COPPER DUCTBANK GROUNDING CONDUCTORS TO PULLBOX.
 - CONTRACTOR SHALL RE-CIRCUIT ALL EXISTING FEEDERS IN EXISTING PANEL TO NEW P1 PANEL. SEE PANEL SCHEDULE FOR ADDITIONAL INFORMATION.
 - EXISTING GENERATOR START SIGNAL FROM FIRE PUMP CONTROLLER TO GENERATOR 6 & 7 SHALL BE RE-CIRCUITED TO GENERATOR 4 & 5 PARALLELING SWITCHGEAR CONTROLS. CIRCUIT SHALL BE A LISTED ELECTRICAL CIRCUIT PROTECTIVE SYSTEM WITH MINIMUM 2-HOUR FIRE RATING AS REQUIRED BY THE NEC. FACTORY CERTIFIED TECHNICIAN SHALL INCORPORATE GENERATOR START SIGNAL AND POWER MONITORING INTO PARALLELING CONTROL SYSTEM. PERFORM FIRE PUMP FIELD ACCEPTANCE TEST PER NFPA 20.
 - CONTRACTOR SHALL MAINTAIN 8'-0" PATHWAY THROUGH AREAWAY.
 - PROVIDE NEW PULLBOX PB-DB301-1 AS DETAILED ON E-701.
 - BOND TO EXISTING GROUND BAR WITH #4/0 IN 0.75" C.
 - BOND PULLBOXES WITH #4/0 IN 0.75" C.
 - UPDATE NAMEPLATES AND GRAPHICS ON SWITCHGEAR AND REMOTE CONTROL CABINET TO INDICATE SPARE AND/OR NEW FEEDER CONNECTIONS. COORDINATE REQUIREMENTS WITH SWITCHGEAR MANUFACTURER.
 - UPDATE NAMEPLATES AND GRAPHICS ON PARALLELING SWITCHGEAR AND REMOTE CONTROL CABINET TO INDICATE NEW FEEDER CONNECTIONS. COORDINATE REQUIREMENTS WITH PARALLELING CONTROLS MANUFACTURER.
 - PIPE INSULATION IN THIS AREA HAS BEEN IDENTIFIED TO CONTAIN ASBESTOS. CONTRACTOR SHALL COORDINATE WITH OWNER'S REPRESENTATIVE IF PROPOSED CONSTRUCTION WILL DISTURB EXISTING INSTALLATIONS.
 - PROVIDE SEPARATELY ENCLOSED 800AF/150AT ELECTRICALLY OPERATED CIRCUIT BREAKER.
 - PROVIDE AND INSTALL MOMENTARY CONTACTS AND CONTROL WIRING FOR CLOSE AND SHUNT CIRCUITS TO ELECTRICALLY OPERATED FIRE PUMP CIRCUIT BREAKER. MOMENTARY CONTACTS SHALL BE MOUNTED IN HOFFMAN BOX ADJACENT TO EXISTING PSG1 CONTROL CABINET.

DEMOLITION LEGEND

DISCONNECT AND REMOVE ELECTRICAL EQUIPMENT, CONCRETE PADS, CONDUIT, GROUT IN ABANDONED FLOOR CONDUITS, SUPPORTS, AND CONDUCTORS BACK TO SOURCE. COORDINATE DEMOLITION WITH INSTALLATION OF NEW ELECTRICAL EQUIPMENT. MAINTAIN SERVICE TO DOWNSTREAM EQUIPMENT. COORDINATE ALL SHUTDOWNS WITH OWNER.



PB-DB301 CONDUIT SCHEDULE - PHASE 2

CONDUIT	SERVICE TYPE	DESTINATION	CONDUIT	SERVICE TYPE	DESTINATION
1	SPARE	N/A	28	SPARE	N/A
2	SPARE	N/A	29	SPARE	N/A
3	SPARE	N/A	30	SPARE	N/A
4	SPARE	N/A	31	NORMAL POWER	P1
5	SPARE	N/A	32	SPARE	N/A
6	SPARE	N/A	33	SPARE	N/A
7	SPARE	N/A	34	SPARE	N/A
8	SPARE	N/A	35	SPARE	N/A
9	SPARE	N/A	36	SPARE	N/A
10	SPARE	N/A	37	SPARE	N/A
11	SPARE	N/A	38	SPARE	N/A
12	SPARE	N/A	39	SPARE	N/A
13	SPARE	N/A	40	SPARE	N/A
14	SPARE	N/A	41	SPARE	N/A
15	SPARE	N/A	42	SPARE	N/A
16	SPARE	N/A	43	SPARE	N/A
17	SPARE	N/A	44	SPARE	N/A
18	SPARE	N/A	45	SPARE	N/A
19	SPARE	N/A	46	SPARE	N/A
20	SPARE	N/A	47	SPARE	N/A
21	SPARE	N/A	48	SPARE	N/A
22	SPARE	N/A	49	SPARE	N/A
23	SPARE	N/A	50	SPARE	N/A
24	#4/0 GND	PULLBOX	51	SPARE	N/A
25	SPARE	N/A	52	SPARE	N/A
26	SPARE	N/A	53	SPARE	N/A
27	SPARE	N/A	54	SPARE	N/A

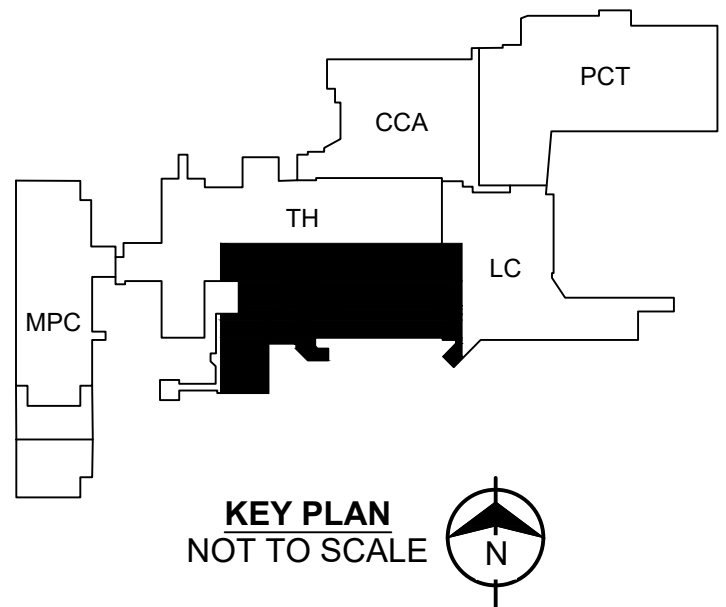
SYMBOL LEGEND

CABLE FILLED CONDUIT SPARE

REFER TO PB-DB301 CONDUIT SCHEDULE

SECTION A-A
PULLBOX PB-DB301 SECTION
NOT TO SCALE

no.	date	by	ckd	description
0	07/09/21	JMC	RED	ISSUED FOR BID
1	08/12/21	JMC	RED	ADDENDUM #1
2	08/20/21	JMC	RED	ADDENDUM #3



BURNS & MCDONNELL
9400 WARD PARKWAY
KANSAS CITY, MO 64114
816-333-9400
LICENSEE NO. 000165

date: 11/20/2020 detailed: J. CHASE
designed: R. DEBAUN checked: R. DEBAUN



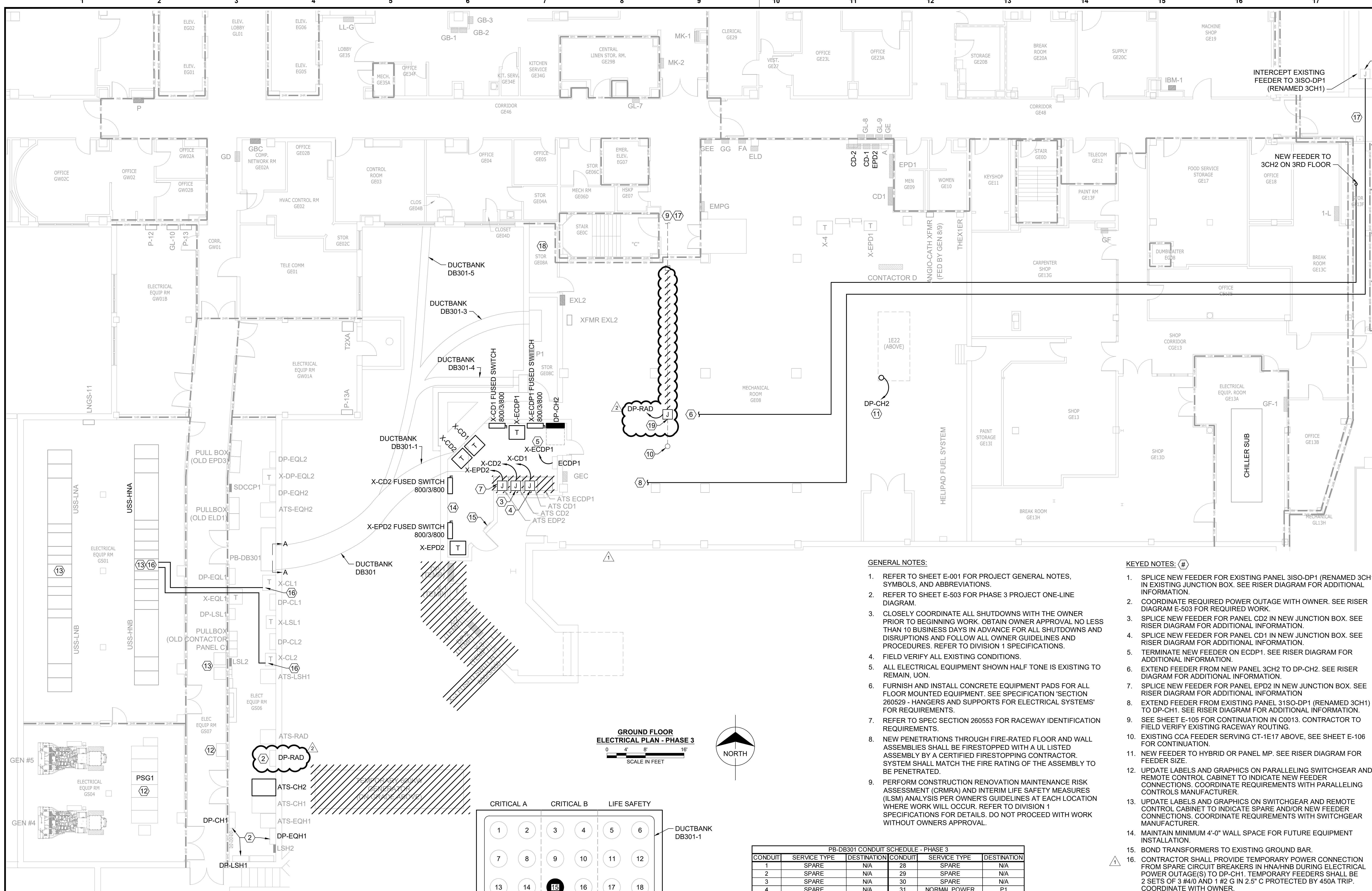
UNIVERSITY HOSPITAL
UNIVERSITY OF MISSOURI HEALTH CARE
COLUMBIA, MISSOURI

CCA & TH EMERGENCY
POWER MODIFICATIONS
GROUND FLOOR
ELECTRICAL PLAN - PHASE 2

project: 128966 contract: CP210961
drawing: E-102 rev: 2
sheet: 1 of 1 sheets
file: 128966 E-102.DWG



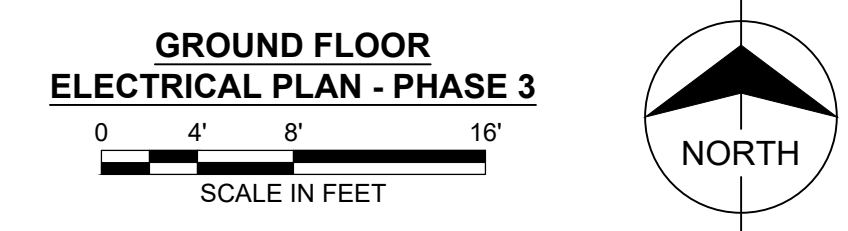
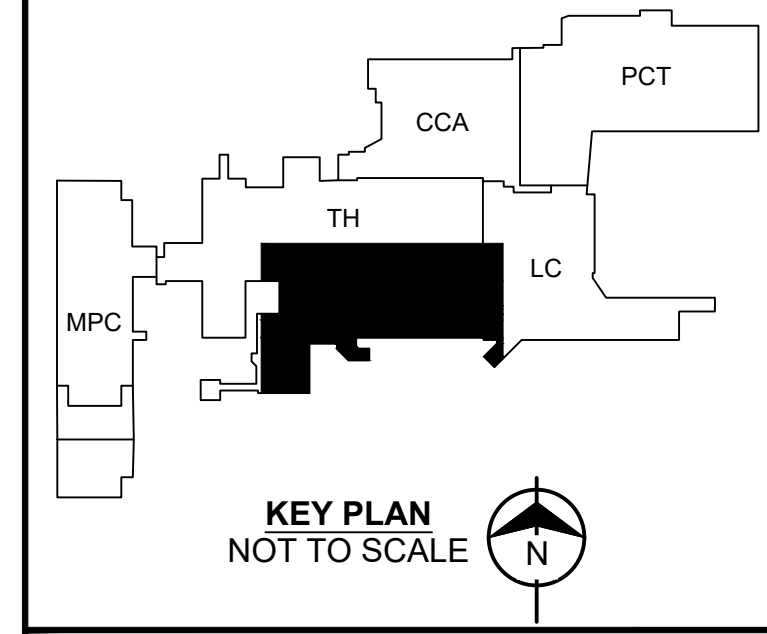
REID E. DEBAUN
PROFESSIONAL ENGINEER
LICENSE NO. PE-200909323



no.	date	by	ckd	description
0	07/09/21	JMC	RED	ISSUED FOR BID
1	08/12/21	JMC	RED	ADDENDUM #1
2	08/20/21	JMC	RED	ADDENDUM #3

- GENERAL NOTES:**
- REFER TO SHEET E-001 FOR PROJECT GENERAL NOTES, SYMBOLS, AND ABBREVIATIONS.
 - REFER TO SHEET E-503 FOR PHASE 3 PROJECT ONE-LINE DIAGRAM.
 - CLOSELY COORDINATE ALL SHUTDOWNS WITH THE OWNER PRIOR TO BEGINNING WORK. OBTAIN OWNER APPROVAL NO LESS THAN 10 BUSINESS DAYS IN ADVANCE FOR ALL SHUTDOWNS AND DISRUPTIONS AND FOLLOW ALL OWNER GUIDELINES AND PROCEDURES. REFER TO DIVISION 1 SPECIFICATIONS.
 - FIELD VERIFY ALL EXISTING CONDITIONS.
 - ALL ELECTRICAL EQUIPMENT SHOWN HALF TONE IS EXISTING TO REMAIN, UON.
 - FURNISH AND INSTALL CONCRETE EQUIPMENT PADS FOR ALL FLOOR MOUNTED EQUIPMENT. SEE SPECIFICATION SECTION 260529 - HANGERS AND SUPPORTS FOR ELECTRICAL SYSTEMS' FOR REQUIREMENTS.
 - REFER TO SPEC SECTION 260553 FOR RACEWAY IDENTIFICATION REQUIREMENTS.
 - NEW PENETRATIONS THROUGH FIRE-RATED FLOOR AND WALL ASSEMBLIES SHALL BE FIRESTOPPED WITH A UL LISTED ASSEMBLY BY A CERTIFIED FIRESTOPPING CONTRACTOR. SYSTEM SHALL MATCH THE FIRE RATING OF THE ASSEMBLY TO BE PENETRATED.
 - PERFORM CONSTRUCTION RENOVATION MAINTENANCE RISK ASSESSMENT (CRMRA) AND INTERIM LIFE SAFETY MEASURES (LSM) ANALYSIS PER OWNER'S GUIDELINES AT EACH LOCATION WHERE WORK WILL OCCUR. REFER TO DIVISION 1 SPECIFICATIONS FOR DETAILS. DO NOT PROCEED WITH WORK WITHOUT OWNERS APPROVAL.

- KEYED NOTES: (K)**
- SPlice NEW FEEDER FOR EXISTING PANEL 3ISO-DP1 (RENAMED 3CH1) IN EXISTING JUNCTION BOX. SEE RISER DIAGRAM FOR ADDITIONAL INFORMATION.
 - COORDINATE REQUIRED POWER OUTAGE WITH OWNER. SEE RISER DIAGRAM E-503 FOR REQUIRED WORK.
 - SPlice NEW FEEDER FOR PANEL CD2 IN NEW JUNCTION BOX. SEE RISER DIAGRAM FOR ADDITIONAL INFORMATION.
 - SPlice NEW FEEDER FOR PANEL CD1 IN NEW JUNCTION BOX. SEE RISER DIAGRAM FOR ADDITIONAL INFORMATION.
 - TERMINATE NEW FEEDER ON ECDP1. SEE RISER DIAGRAM FOR ADDITIONAL INFORMATION.
 - EXTEND FEEDER FROM NEW PANEL 3CH2 TO DP-CH2. SEE RISER DIAGRAM FOR ADDITIONAL INFORMATION.
 - SPlice NEW FEEDER FOR PANEL EPD2 IN NEW JUNCTION BOX. SEE RISER DIAGRAM FOR ADDITIONAL INFORMATION.
 - EXTEND FEEDER FROM EXISTING PANEL 3ISO-DP1 (RENAMED 3CH1) TO DP-CH1. SEE RISER DIAGRAM FOR ADDITIONAL INFORMATION.
 - SEE SHEET E-105 FOR CONTINUATION IN C0013. CONTRACTOR TO FIELD VERIFY EXISTING RACEWAY ROUTING.
 - EXISTING CCA FEEDER SERVING CT-1E17 ABOVE. SEE SHEET E-106 FOR CONTINUATION.
 - NEW FEEDER TO HYBRID OR PANEL MP. SEE RISER DIAGRAM FOR FEEDER SIZE.
 - UPDATE LABELS AND GRAPHICS ON PARALLELING SWITCHGEAR AND REMOTE CONTROL CABINET TO INDICATE NEW FEEDER CONNECTIONS. COORDINATE REQUIREMENTS WITH PARALLELING CONTROLS MANUFACTURER.
 - UPDATE LABELS AND GRAPHICS ON SWITCHGEAR AND REMOTE CONTROL CABINET TO INDICATE SPARE AND/OR NEW FEEDER CONNECTIONS. COORDINATE REQUIREMENTS WITH SWITCHGEAR MANUFACTURER.
 - MAINTAIN MINIMUM 4'-0" WALL SPACE FOR FUTURE EQUIPMENT INSTALLATION.
 - BOND TRANSFORMERS TO EXISTING GROUND BAR.
 - CONTRACTOR SHALL PROVIDE TEMPORARY POWER CONNECTION FROM SPARE CIRCUIT BREAKERS IN HNA/HNB DURING ELECTRICAL POWER OUTAGE(S) TO DP-CH1. TEMPORARY FEEDERS SHALL BE 2 SETS OF 3 #4/0 AND 1 #2 G IN 2.5" C PROTECTED BY 450A TRIP. COORDINATE WITH OWNER.
 - WORK IN CORRIDORS SHALL OCCUR DURING NIGHT HOURS.
 - PIPE INSULATION IN THIS AREA HAS BEEN IDENTIFIED TO CONTAIN ASBESTOS. CONTRACTOR SHALL COORDINATE WITH OWNERS REPRESENTATIVE IF PROPOSED CONSTRUCTION WILL DISTURB EXISTING INSTALLATIONS.
 - INTERCEPT AND SPlice EXISTING CONDUCTORS FOR NEW SERVICE TO CT-1E17.



CRITICAL A		CRITICAL B		LIFE SAFETY	
1	2	3	4	5	6
7	8	9	10	11	12
13	14	15	16	17	18
19	20	21	22	23	24
25	26	27	28	29	30
31	32	33	34	35	36
37	38	39	40	41	42
43	44	45	46	47	48
49	50	51	52	53	54

PB-DB301 CONDUIT SCHEDULE - PHASE 3					
CONDUIT	SERVICE TYPE	DESTINATION	CONDUIT	SERVICE TYPE	DESTINATION
1	SPARE	N/A	28	SPARE	N/A
2	SPARE	N/A	29	SPARE	N/A
3	SPARE	N/A	30	SPARE	N/A
4	SPARE	N/A	31	NORMAL POWER	P1
5	SPARE	N/A	32	SPARE	N/A
6	SPARE	N/A	33	SPARE	N/A
7	SPARE	N/A	34	SPARE	N/A
8	SPARE	N/A	35	EQUIPMENT POWER	X-EPD2
9	SPARE	N/A	36	EQUIPMENT POWER	CT-1E17
10	SPARE	N/A	37	SPARE	N/A
11	SPARE	N/A	38	SPARE	N/A
12	SPARE	N/A	39	SPARE	N/A
13	SPARE	N/A	40	SPARE	N/A
14	SPARE	N/A	41	SPARE	N/A
15	CRITICAL POWER	DP-CH2	42	SPARE	N/A
16	SPARE	N/A	43	SPARE	N/A
17	SPARE	N/A	44	SPARE	N/A
18	SPARE	N/A	45	SPARE	N/A
19	CRITICAL POWER	3CH1	46	SPARE	N/A
20	CRITICAL POWER	3CH1	47	SPARE	N/A
21	CRITICAL POWER	DP-CH2	48	SPARE	N/A
22	CRITICAL POWER	DP-CH2	49	SPARE	N/A
23	LIFE SAFETY POWER	X-CD2	50	SPARE	N/A
24	#4/0 GND	N/A	51	SPARE	N/A
25	SPARE	N/A	52	SPARE	N/A
26	SPARE	N/A	53	SPARE	N/A
27	SPARE	N/A	54	SPARE	N/A

DEMOLITION LEGEND

DISCONNECT AND REMOVE ELECTRICAL EQUIPMENT, CONCRETE PADS, CONDUIT, GROUT IN ABANDONED FLOOR CONDUITS, SUPPORTS, AND CONDUCTORS BACK TO SOURCE. COORDINATE DEMOLITION WITH INSTALLATION OF NEW ELECTRICAL EQUIPMENT. MAINTAIN SERVICE TO DOWNSTREAM EQUIPMENT. COORDINATE ALL SHUTDOWNS WITH OWNER.

SYMBOL LEGEND

CABLE FILLED CONDUIT SPARE

REFER TO PB-DB301 CONDUIT SCHEDULE

SECTION A-A
PULLBOX PB-DB301 SECTION
NOT TO SCALE



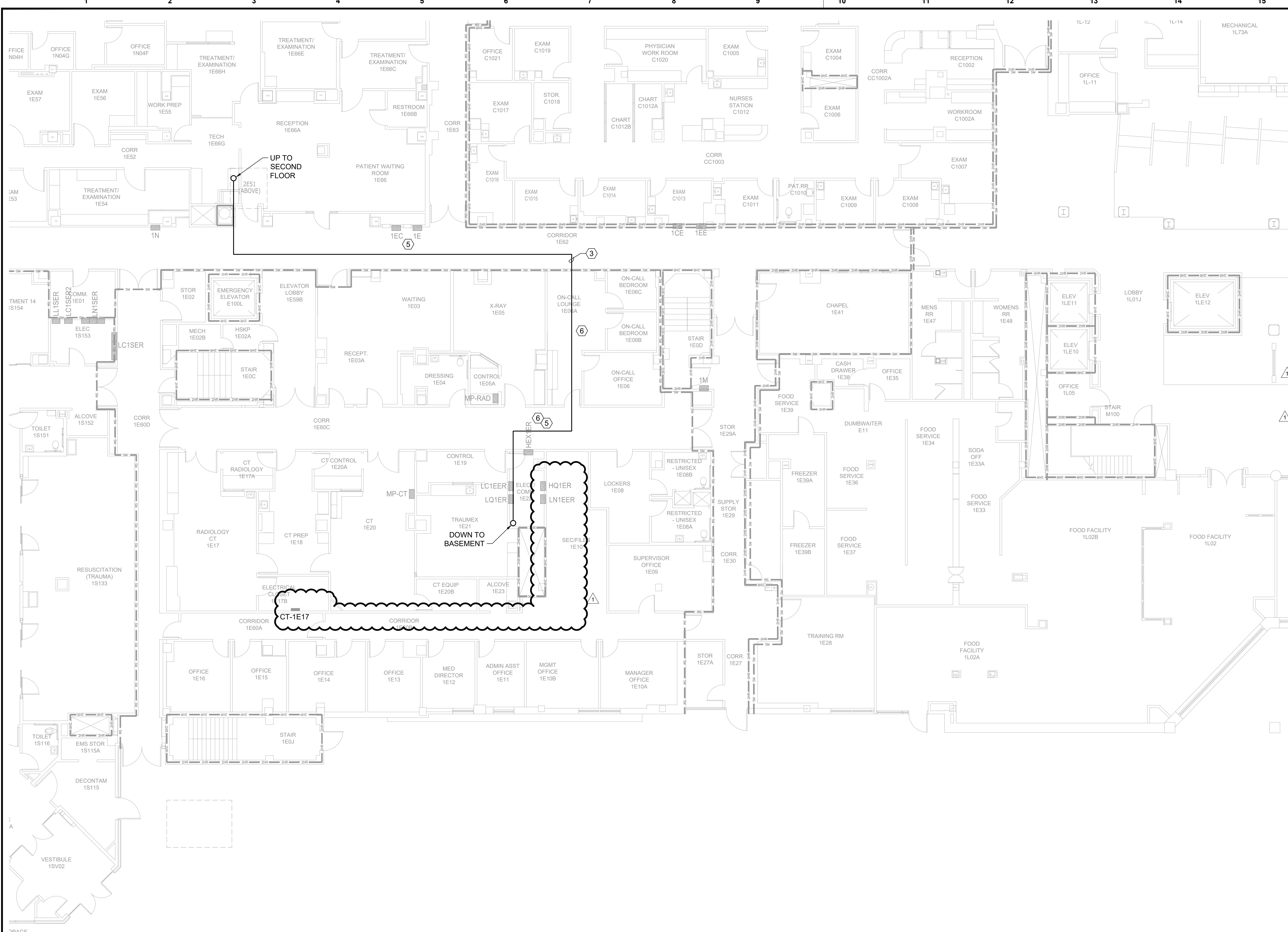
BURNS & MCDONNELL
9400 WARD PARKWAY
KANSAS CITY, MO 64114
816-333-9400
LICENSEE NO. 000165

date 11/20/2020 detailed J. CHASE
designed R. DEBAUN checked R. DEBAUN

UNIVERSITY HOSPITAL
UNIVERSITY OF MISSOURI HEALTH CARE
COLUMBIA, MISSOURI

CCA & TH EMERGENCY
POWER MODIFICATIONS
GROUND FLOOR
ELECTRICAL PLAN - PHASE 3

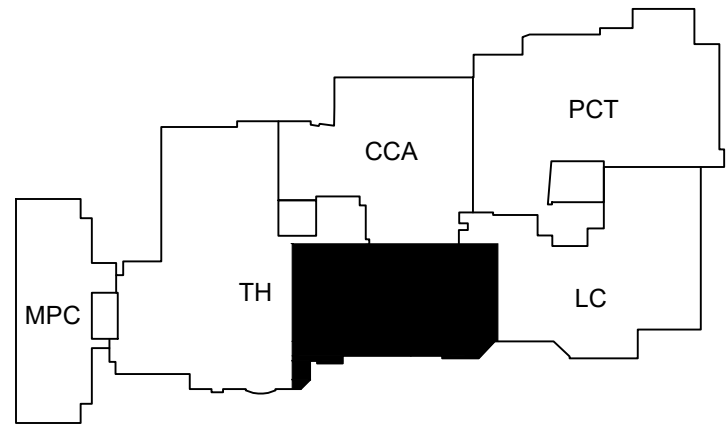
project 128966 contract CP210961
drawing of rev. sheets
E-104 - 2
sheet 128966 E-104.DWG



- GENERAL NOTES:**
- REFER TO SHEET E-001 FOR PROJECT GENERAL NOTES, SYMBOLS, AND ABBREVIATIONS.
 - CLOSELY COORDINATE ALL SHUTDOWNS WITH THE OWNER PRIOR TO BEGINNING WORK. OBTAIN OWNER APPROVAL NO LESS THAN 10 BUSINESS DAYS IN ADVANCE FOR ALL SHUTDOWNS AND DISRUPTIONS AND FOLLOW ALL OWNER GUIDELINES AND PROCEDURES. REFER TO DIVISION 1 SPECIFICATIONS.
 - FIELD VERIFY ALL EXISTING CONDITIONS.
 - ALL ELECTRICAL EQUIPMENT SHOWN HALF TONE IS EXISTING TO REMAIN, UNO.
 - FURNISH AND INSTALL CONCRETE EQUIPMENT PADS FOR ALL FLOOR MOUNTED EQUIPMENT. SEE SPECIFICATION 'SECTION 260529 - HANGERS AND SUPPORTS FOR ELECTRICAL SYSTEMS' FOR REQUIREMENTS.
 - REFER TO SPEC SECTION 260553 FOR RACEWAY IDENTIFICATION REQUIREMENTS.
 - NEW PENETRATIONS THROUGH FIRE-RATED FLOOR AND WALL ASSEMBLIES SHALL BE FIRESTOPPED WITH A UL LISTED ASSEMBLY BY A CERTIFIED FIRESTOPPING CONTRACTOR. SYSTEM SHALL MATCH THE FIRE RATING OF THE ASSEMBLY TO BE PENETRATED.
 - PERFORM CONSTRUCTION RENOVATION MAINTENANCE RISK ASSESSMENT (CRMRA) AND INTERIM LIFE SAFETY MEASURES (ILSM) ANALYSIS PER OWNER'S GUIDELINES AT EACH LOCATION WHERE WORK WILL OCCUR. REFER TO DIVISION 1 SPECIFICATIONS FOR DETAILS. DO NOT PROCEED WITH WORK WITHOUT OWNERS APPROVAL.

- KEYED NOTES: (#)**
- NOT USED
 - NOT USED
 - NEW CONDUIT ROUTE TO HYBRID OR PANEL MP. SEE RISER DIAGRAM FOR FEEDER SIZE.
 - NOT USED
 - WORK IN CORRIDORS SHALL OCCUR DURING NIGHT HOURS.
 - WORK IN THIS AREA REQUIRES AN INFECTION CONTROL BARRIER. THE BARRIER SHALL BE CONSTRUCTED OF 6 OR 10-MIL FIRE-RESISTANT POLYETHYLENE EXTENDING FROM THE FLOOR TO CEILING WITH A ZIPPER (ZIP WALL) OPENING. IF NECESSARY, NON-COMBUSTIBLE COMPONENTS (ZIP POLES, ETC...) SHALL BE UTILIZED TO SUPPORT THE POLYETHYLENE. THE BARRIER SHALL BE ADEQUATELY SEALED AT THE FLOOR, WALL AND CEILING CONNECTIONS AND BE MAINTAINED THROUGHOUT THE PROJECT TO PREVENT THE MIGRATION OF DUST FROM THE WORK ARE INTO THE ADJACENT OCCUPIED SPACE. THE ZIPPER/ZIP WALL OPENING SHALL REMAIN CLOSED DURING THE WORK PERIOD. THERE SHALL BE NO ADDITIONAL PENETRATIONS IN THE BARRIER.

no.	date	by	ckd	description
0	07/09/21	JMC	RED	ISSUED FOR BID
1	08/20/21	JMC	RED	ADDENDUM #3



KEY PLAN
NOT TO SCALE



9400 WARD PARKWAY
KANSAS CITY, MO 64114
816-333-9400
LICENSEE NO. 000165

date	11/20/2020	detailed	J. CHASE
designed	R. DEBAUN	checked	R. DEBAUN



UNIVERSITY HOSPITAL
UNIVERSITY OF MISSOURI HEALTH CARE
COLUMBIA, MISSOURI

CCA & TH EMERGENCY
POWER MODIFICATIONS

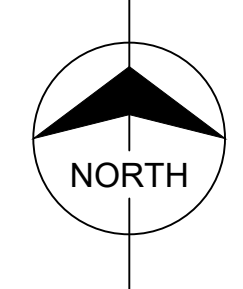
FIRST FLOOR
ELECTRICAL PLAN - PHASE 3

project	128966	contract	CP210961
drawing		rev.	

E-106 - 1

sheet	of	sheets
file	128966	E-106.DWG

FIRST FLOOR
ELECTRICAL PLAN - PHASE 3
SCALE IN FEET



REID E. DEBAUN
PROFESSIONAL ENGINEER
LICENSE NO. PE-200909323

FEEDER SIZE SCHEDULE	
FEEDER MARK	COPPER CONDUCTOR AND CONDUIT SIZE
200A	4-#3/0 AND #6 G (EXIST)
350	3-500KCMIL AND #3 G -3"C
400	3-500KCMIL AND #3 G (EXIST)
400A	2 SETS (4-#3/0 AND #3 G) (EXIST)
400B	4-500KCMIL AND #3 G (EXIST)
400N	4-500KCMIL AND #3G -3.5"C
400X	2 SETS (4#3/0 AND #2G -2"C)
450	2 SETS (3#4/0 AND #2G -2.5"C)
600A	2 SETS (3-350KCMIL AND #1 G) (EXIST)
600N	2 SETS (4-350KCMIL AND #1 G -3"C)
800	2 SETS (3-500KCMIL AND #1/0 G -3"C)
800A	2 SETS (3-600KCMIL AND #1/0 G) (EXIST)
800B	2 SETS (4-500KCMIL AND #1/0 G) (EXIST)
800C	2 SETS (4-600KCMIL AND #1/0 G) (EXIST)
800N	2 SETS (4-500KCMIL AND #1/0 G -3.5"C)
800X	2 SETS (4-600KCMIL AND #3/0 G -4"C)
1000X	3 SETS (4-500KCMIL AND #3/0 G -3.5"C)

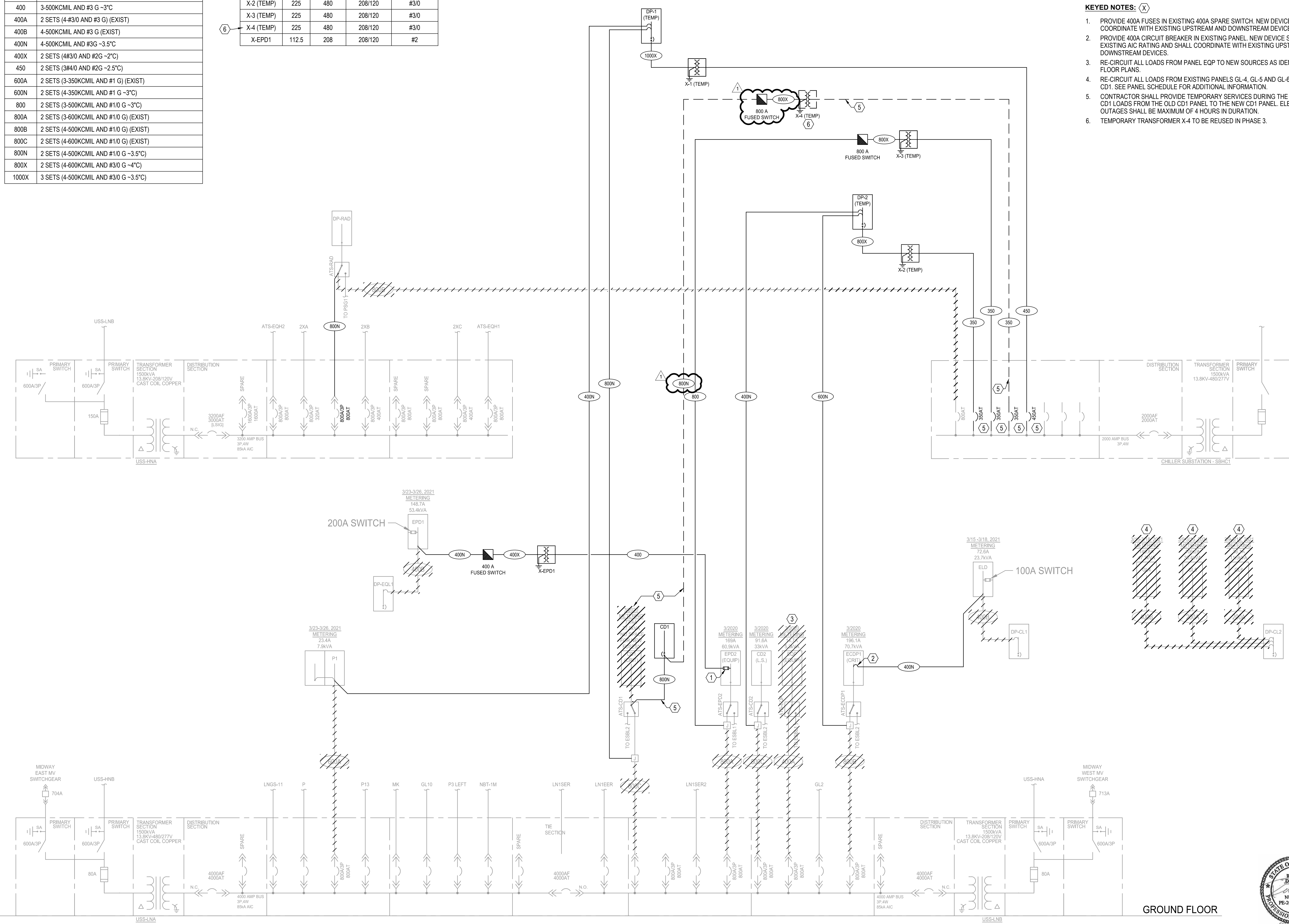
DRY-TYPE TRANSFORMER SCHEDULE				
NO.	KVA	PRIMARY VOLTAGE	SECONDARY VOLTAGE	GROUNDING ELECTRODE CONDUCTOR
X-1 (TEMP)	300	480	208/120	#3/0
X-2 (TEMP)	225	480	208/120	#3/0
X-3 (TEMP)	225	480	208/120	#3/0
X-4 (TEMP)	225	480	208/120	#3/0
X-EPD1	112.5	208	208/120	#2

GENERAL NOTES:

- REFER TO SHEET E-001 FOR PROJECT GENERAL NOTES, SYMBOLS, AND ABBREVIATIONS.
- REMOVE ALL CONDUIT AND WIRING BACK TO SOURCE AS INDICATED.
- SPECTRA DEVICES ARE OBSOLETE AND WILL NO LONGER BE SUPPORTED BY THE MANUFACTURER. CONTRACTOR TO PROVIDE AND INSTALL REQUIRED RETROFIT HARDWARE AND TMAX DEVICES IN EXISTING SPECTRA PANELBOARDS.

KEYED NOTES: (X)

- PROVIDE 400A FUSES IN EXISTING 400A SPARE SWITCH. NEW DEVICE SHALL COORDINATE WITH EXISTING UPSTREAM AND DOWNSTREAM DEVICES.
- PROVIDE 400A CIRCUIT BREAKER IN EXISTING PANEL. NEW DEVICE SHALL MATCH EXISTING AIC RATING AND SHALL COORDINATE WITH EXISTING UPSTREAM AND DOWNSTREAM DEVICES.
- RE-CIRCUIT ALL LOADS FROM PANEL EQP TO NEW SOURCES AS IDENTIFIED ON FLOOR PLANS.
- RE-CIRCUIT ALL LOADS FROM EXISTING PANELS GL-4, GL-5 AND GL-6 TO NEW PANEL CD1. SEE PANEL SCHEDULE FOR ADDITIONAL INFORMATION.
- CONTRACTOR SHALL PROVIDE TEMPORARY SERVICES DURING THE CUTOVER OF CD1 LOADS FROM THE OLD CD1 PANEL TO THE NEW CD1 PANEL. ELECTRICAL OUTAGES SHALL BE MAXIMUM OF 4 HOURS IN DURATION.
- TEMPORARY TRANSFORMER X-4 TO BE REUSED IN PHASE 3.



1 PARTIAL RISER DIAGRAM - PHASE 1
NO SCALE



no.	date	by	ckd	description
0	07/09/21	JMC	RED	ISSUED FOR BID
1	08/20/21	JMC	RED	ADDENDUM #3

BURNS & MCDONNELL
9400 WARD PARKWAY
KANSAS CITY, MO 64114
816-333-9400
LICENSEE NO. 000165

date	11/20/2020	detailed	J. CHASE
designed	R. DEBAUN	checked	R. DEBAUN

UNIVERSITY HOSPITAL
UNIVERSITY OF MISSOURI HEALTH CARE
COLUMBIA, MISSOURI

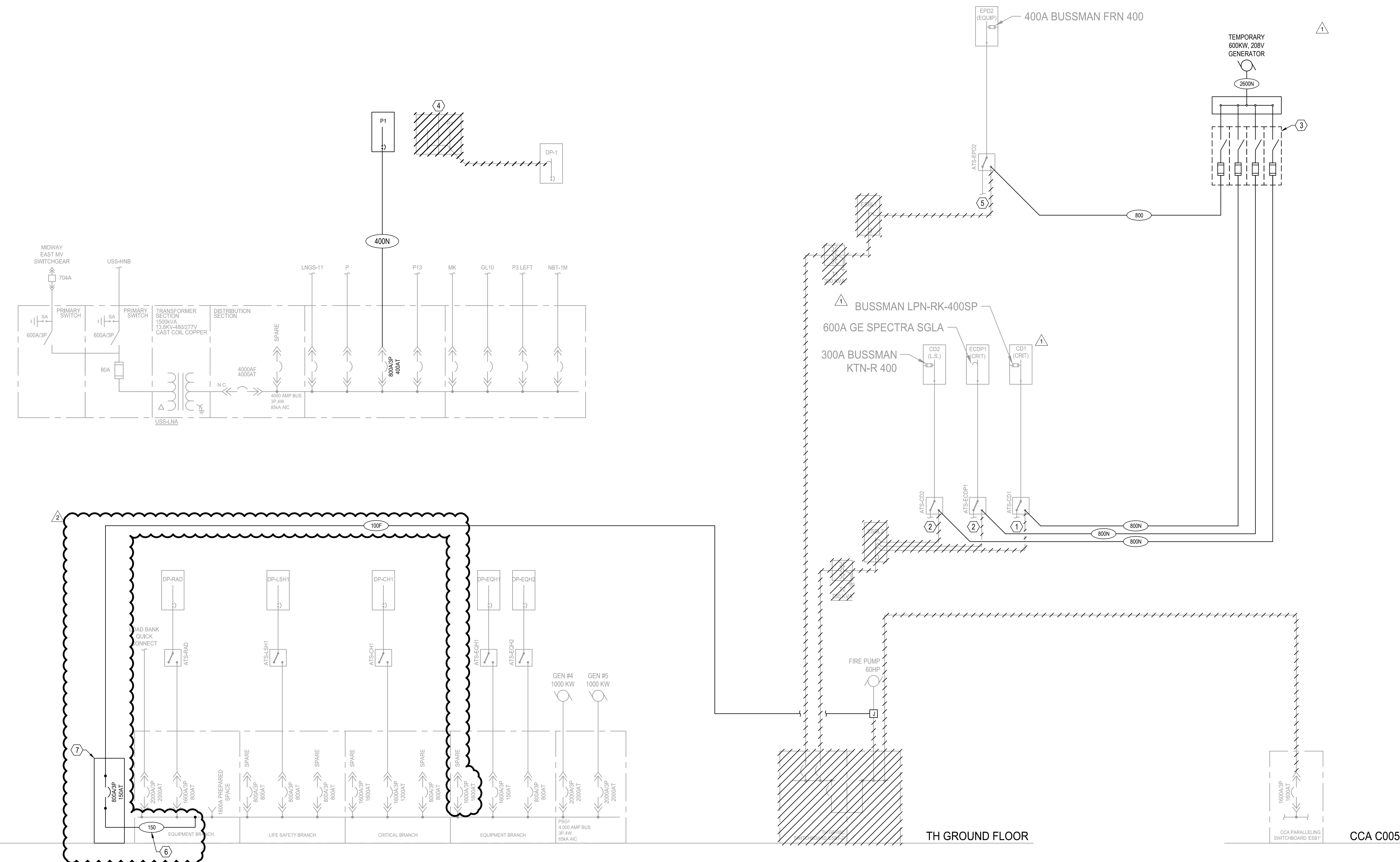
CCA & TH EMERGENCY POWER MODIFICATIONS
ELECTRICAL RISER DIAGRAM - PHASE 1

project	128966	contract	CP210961
drawing	E-501	rev.	1
sheet	of	of	of
file	128966	E-501.DWG	

REID E. DEBAUN
PROFESSIONAL ENGINEER
LICENSE NO. PE-200909323

FEEDER SIZE SCHEDULE	
FEEDER MARK	COPPER CONDUCTOR AND CONDUIT SIZE
100F	DRAKA LIFELINE 2-HOUR FIRE RESISTIVE CABLE 3#1 AND 1#8G -2°C
150	3#1/0 AND #6G -1.5°C
400N	4-500KCMIL AND #3G -3.5°C
800	2 SETS (3-500KCMIL AND #1/0G -3°C)
800N	2 SETS (4-500KCMIL AND #1/0G -3.5°C)
2600N	7 SETS (4-500KCMIL AND 400KCMILG -4°C)

- GENERAL NOTES:**
- REFER TO SHEET E-001 FOR PROJECT GENERAL NOTES, SYMBOLS, AND ABBREVIATIONS.
 - REMOVE ALL CONDUIT AND WIRING BACK TO SOURCE AS INDICATED.
 - SPECTRA DEVICES ARE OBSOLETE AND WILL NO LONGER BE SUPPORTED BY THE MANUFACTURER. CONTRACTOR TO PROVIDE AND INSTALL REQUIRED RETROFIT HARDWARE AND TMAX DEVICES IN EXISTING SPECTRA PANELBOARDS.
- KEYED NOTES: (X)**
- NORMAL POWER CONTINUATION TO DP-1 (TEMP). SEE DRAWING E-501 FOR CONTINUATION.
 - NORMAL POWER CONTINUATION TO DP-2 (TEMP). SEE DRAWING E-501 FOR CONTINUATION.
 - 800A FUSED SWITCH (TYPICAL OF 4). OVERCURRENT PROTECTION DEVICES SHALL COORDINATE WITH EXISTING DOWNSTREAM DEVICES.
 - RE-CIRCUIT ALL LOADS FROM EXISTING PANEL P1 TO NEW PANEL P1. SEE PANEL SCHEDULE FOR ADDITIONAL INFORMATION.
 - NORMAL POWER CONTINUATION TO TRANSFORMER X-3 (TEMP). SEE DRAWING E-501 FOR CONTINUATION.
 - TAP CONDUCTORS SHALL NOT EXCEED 10'-0" IN LENGTH. COORDINATE ALL OUTAGES WITH OWNER.
 - SEPARATELY ENCLOSED ELECTRONICALLY OPERATED CIRCUIT BREAKER.



1 PARTIAL RISER DIAGRAM - PHASE 2
NO SCALE



no.	date	by	ckd	description
0	07/09/21	JMC	RED	ISSUED FOR BID
1	08/12/21	JMC	RED	ADDENDUM #1
2	08/20/21	JMC	RED	ADDENDUM #3

BURNS & MCDONNELL
9400 WARD PARKWAY
KANSAS CITY, MO 64114
816-333-9400
LICENSEE NO. 000165

date	11/20/2020	detailed	J. CHASE
designed	R. DEBAUN	checked	R. DEBAUN



CCA & TH EMERGENCY
POWER MODIFICATIONS
ELECTRICAL RISER DIAGRAM - PHASE 2

project	128966	contract	CP210961
drawing	E-502	rev.	2
sheet	of	rev.	of
file	128966	sheet	E-502.DWG

REID E. DEBAUN
PROFESSIONAL ENGINEER
LICENSE NO. PE-200909323

no.	date	by	ckd	description
0	07/09/21	JMC	RED	ISSUED FOR BID
1	08/12/21	JMC	RED	ADDENDUM #1
2	08/20/21	JMC	RED	ADDENDUM #3

125A SIEMENS
 3CH2
 3CH1
 RENAME 3ISO-DP1 TO 3CH1
 125A SQUARE D EDB34125

THIRD FLOOR

FEEDER SIZE SCHEDULE	
FEEDER MARK	COPPER CONDUCTOR AND CONDUIT SIZE
125N	4-#1 AND #6G -1.5°C
300N	5-350KCMIL -3°C
400	3-500KCMIL AND #3G -3°C
400N	4-500KCMIL AND #3G -3.5°C
600A	2 SETS (4-350KCMIL AND #11/0G) (EXIST)
600N	2 SETS (4-350KCMIL AND #11/0G -3°C)
800	2 SETS (3-500KCMIL AND #11/0G -4°C)
800A	2 SETS (4-600KCMIL AND #11/0G) (EXIST)
800B	2 SETS (3-600KCMIL AND #11/0G) (EXIST)
800N	2 SETS (4-500KCMIL AND #11/0G -4°C)
800X	2 SETS (4-600KCMIL AND #3/0 G -4°C)
1200N	3 SETS (4-600KCMIL AND #3/0G -4°C)

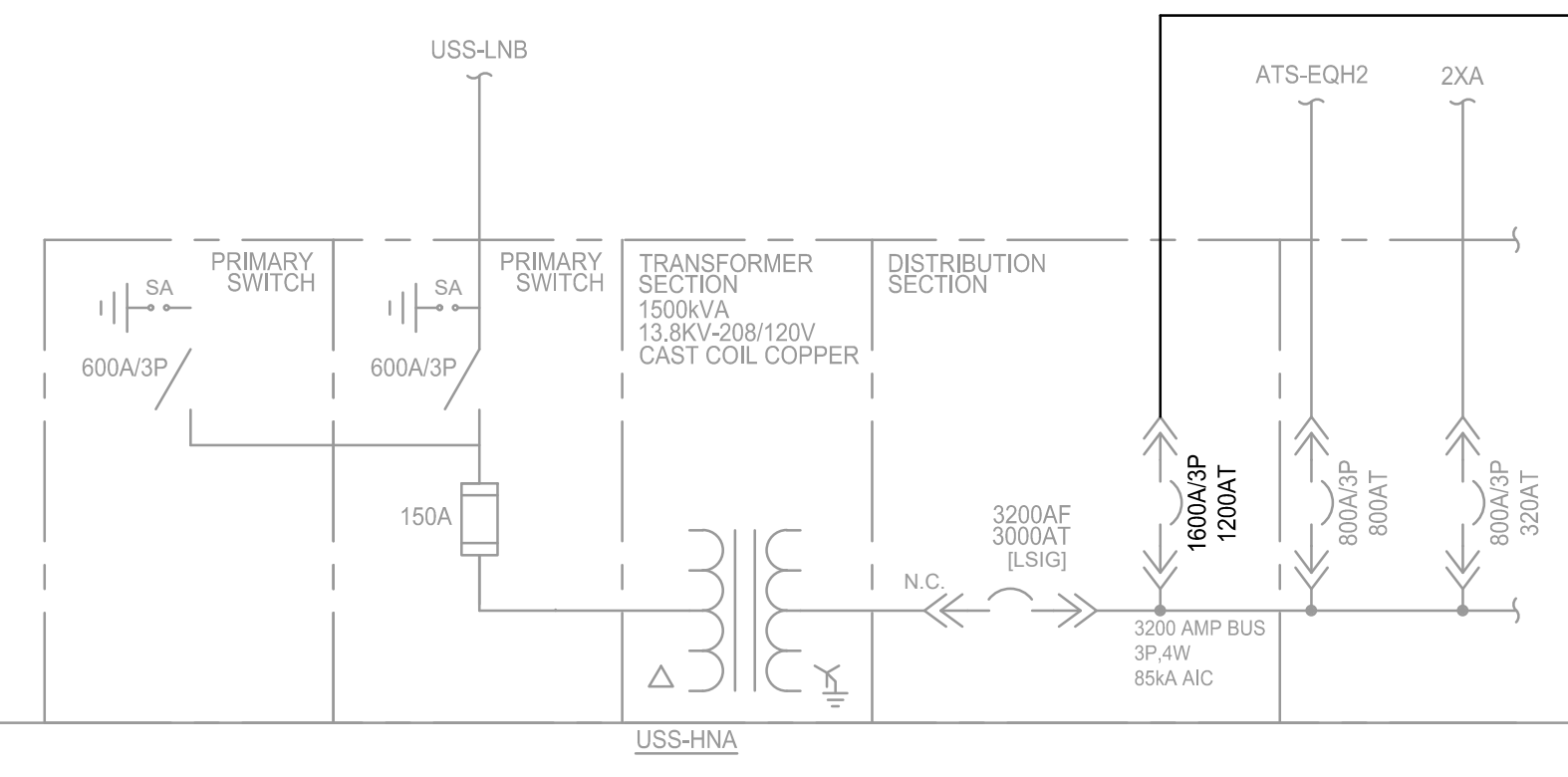
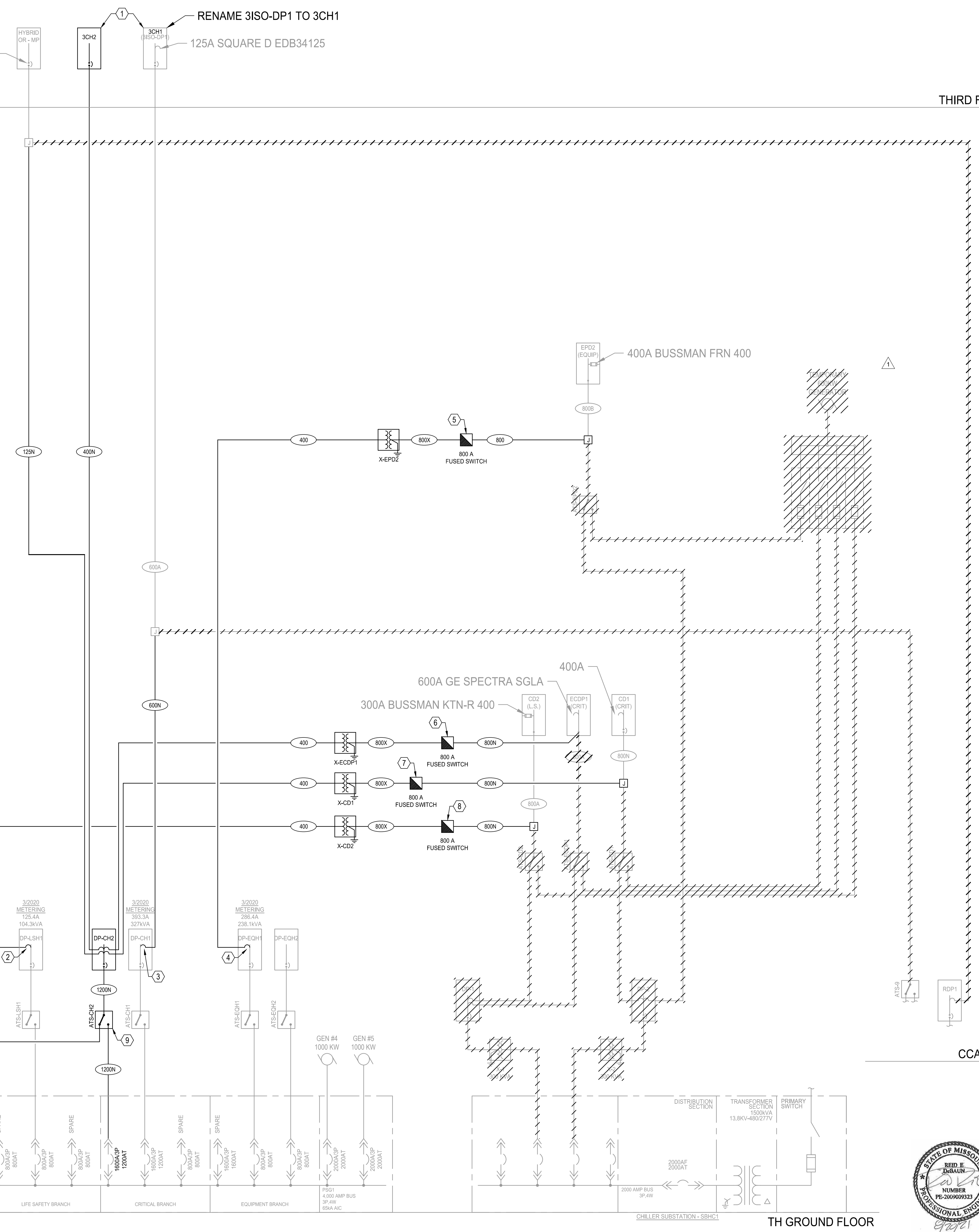
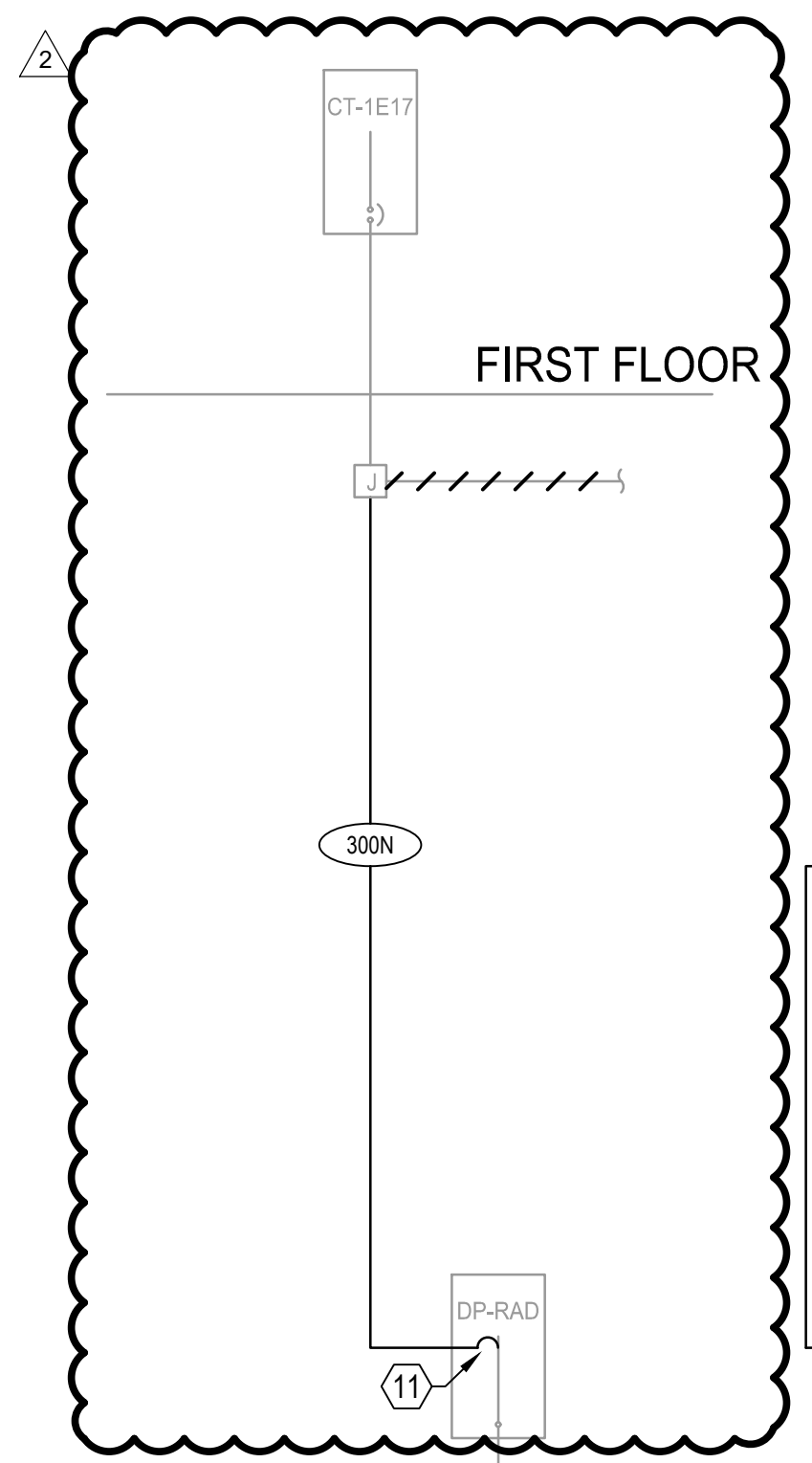
DRY-TYPE TRANSFORMER SCHEDULE				
NO.	KVA	PRIMARY VOLTAGE	SECONDARY VOLTAGE	GROUNDING ELECTRODE CONDUCTOR
X-CD1	225	480	208/120	#3/0
X-CD2	225	480	208/120	#3/0
X-ECDP1	225	480	208/120	#3/0
X-EPD2	225	480	208/120	#3/0

GENERAL NOTES:

- REFER TO SHEET E-001 FOR PROJECT GENERAL NOTES, SYMBOLS, AND ABBREVIATIONS.
- REMOVE ALL CONDUIT AND WIRING BACK TO SOURCE AS INDICATED.
- SPECTRA DEVICES ARE OBSOLETE AND WILL NO LONGER BE SUPPORTED BY THE MANUFACTURER. CONTRACTOR TO PROVIDE AND INSTALL REQUIRED RETROFIT HARDWARE AND TMAX DEVICES IN EXISTING SPECTRA PANELBOARDS.

KEYED NOTES: (X)

- BOND THE EQUIPMENT GROUNDING BUSES OF 3CH1 AND 3CH2 WITH A MINIMUM #10AWG.
- PROVIDE AND INSTALL 400A CIRCUIT BREAKER IN EXISTING PANEL. NEW DEVICE SHALL COORDINATE WITH EXISTING UPSTREAM 800A MAIN BREAKER AND EXISTING DOWNSTREAM 208V, 300A FUSE IN PANEL CD2. COORDINATE ALL ELECTRICAL OUTAGES WITH OWNER.
- PROVIDE AND INSTALL 600A CIRCUIT BREAKER IN EXISTING PANEL. NEW DEVICE SHALL COORDINATE WITH EXISTING UPSTREAM 1200A MAIN BREAKER AND EXISTING DOWNSTREAM 125A CIRCUIT BREAKER IN PANEL 3CH1. COORDINATE ALL ELECTRICAL OUTAGES WITH OWNER.
- PROVIDE AND INSTALL 400A CIRCUIT BREAKER IN EXISTING PANEL. NEW DEVICE SHALL COORDINATE WITH EXISTING UPSTREAM 800A MAIN BREAKER AND EXISTING DOWNSTREAM 208V, 400A FUSE IN PANEL EPD2. COORDINATE ALL ELECTRICAL OUTAGES WITH OWNER.
- PROVIDE AND INSTALL 800A FUSED SWITCH. NEW DEVICE SHALL COORDINATE WITH EXISTING UPSTREAM 800A, 480V MAIN BREAKER IN DP-EQH1 AND EXISTING DOWNSTREAM 400A FUSE IN EPD2.
- PROVIDE AND INSTALL 800A FUSED SWITCH. NEW DEVICE SHALL COORDINATE WITH NEW UPSTREAM 1200A, 480V MAIN BREAKER IN DP-CH2 AND EXISTING DOWNSTREAM 400A FUSE IN CD1.
- PROVIDE AND INSTALL 800A FUSED SWITCH. NEW DEVICE SHALL COORDINATE WITH NEW UPSTREAM 400A, 480V FEEDER BREAKER IN DP-LSH1 AND EXISTING DOWNSTREAM 300A FUSE IN CD2.
- PROVIDE REQUIRED HARDWARE AND WIRING TO INCORPORATE TRANSFER SWITCH MONITORING AT GENERATOR CONTROL CABINET.
- PHASE 1 TRANSFORMER X-4 (TEMP) TO BE RE-USED FOR PHASE 3 PERMANENT INSTALLATION.
- PROVIDE AND INSTALL 300A CIRCUIT BREAKER IN EXISTING PANEL. COORDINATE ALL ELECTRICAL OUTAGES WITH OWNER.



1 PARTIAL RISER DIAGRAM - PHASE 3
 NO SCALE

BURNS & MCDONNELL
 9400 WARD PARKWAY
 KANSAS CITY, MO 64114
 816-333-9400
 LICENSEE NO. 000165

date	11/20/2020	detailed	J. CHASE
designed	R. DEBAUN	checked	R. DEBAUN



UNIVERSITY HOSPITAL
 UNIVERSITY OF MISSOURI HEALTH CARE
 COLUMBIA, MISSOURI

CCA & TH EMERGENCY
 POWER MODIFICATIONS
 ELECTRICAL RISER DIAGRAM - PHASE 3

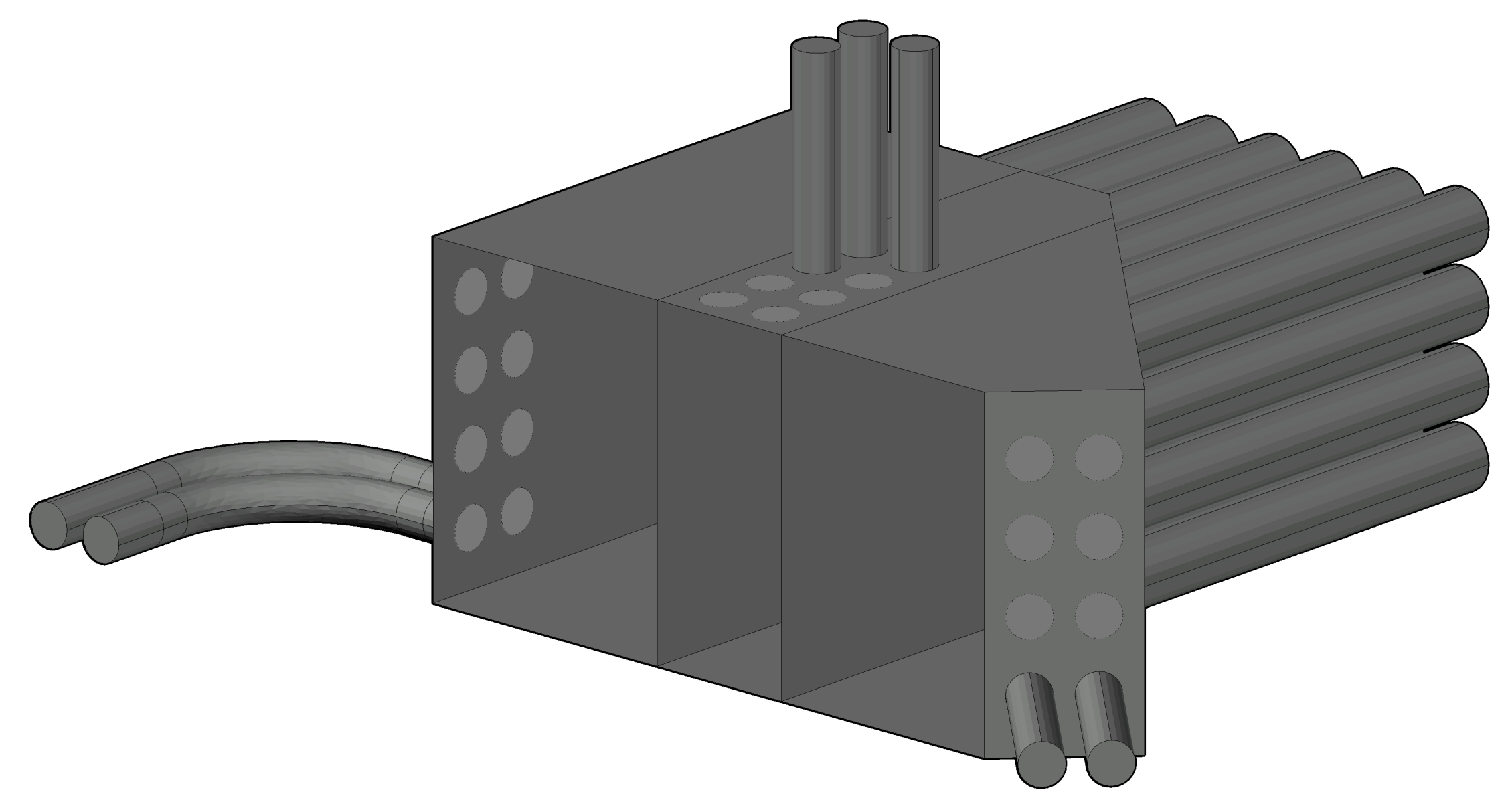
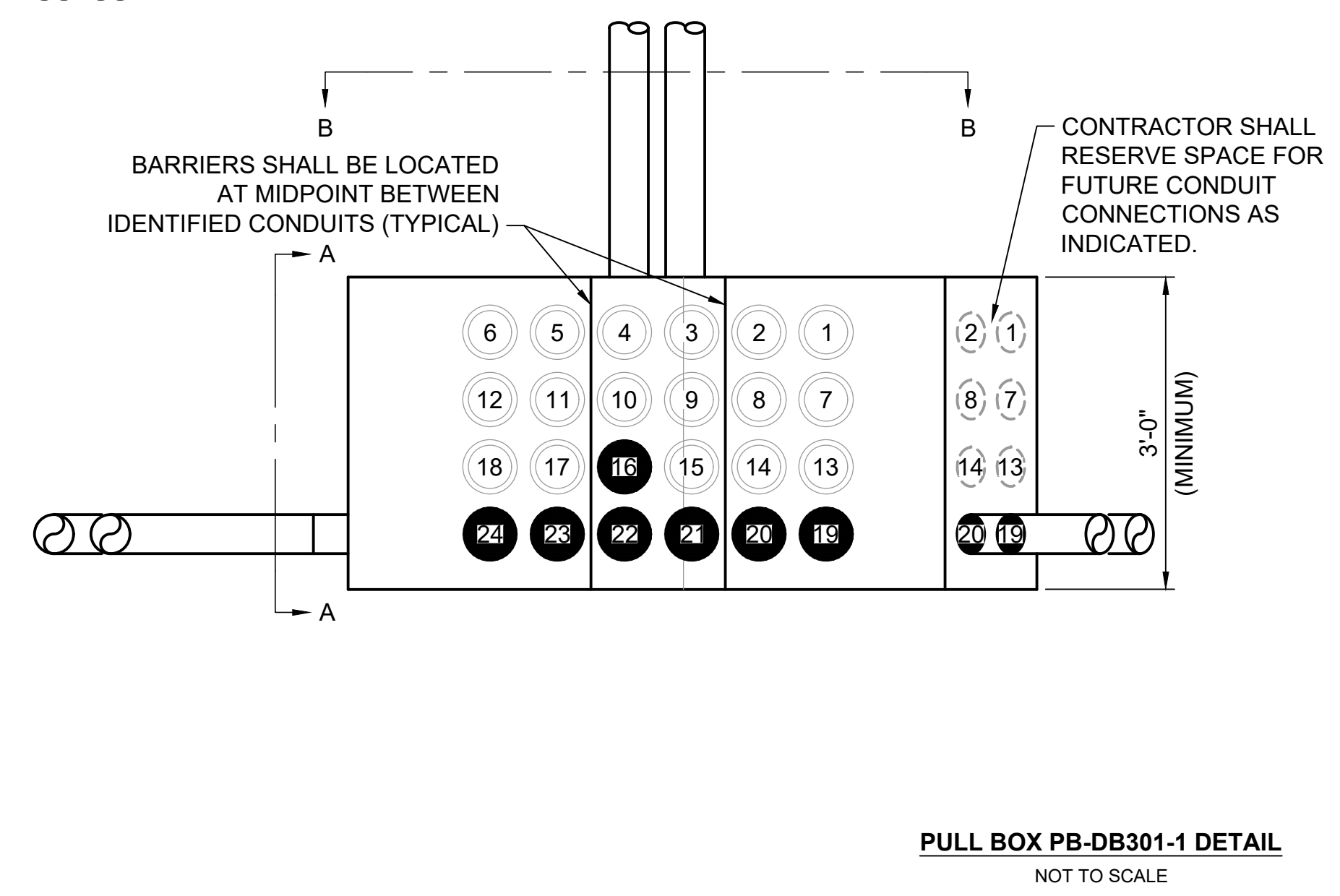
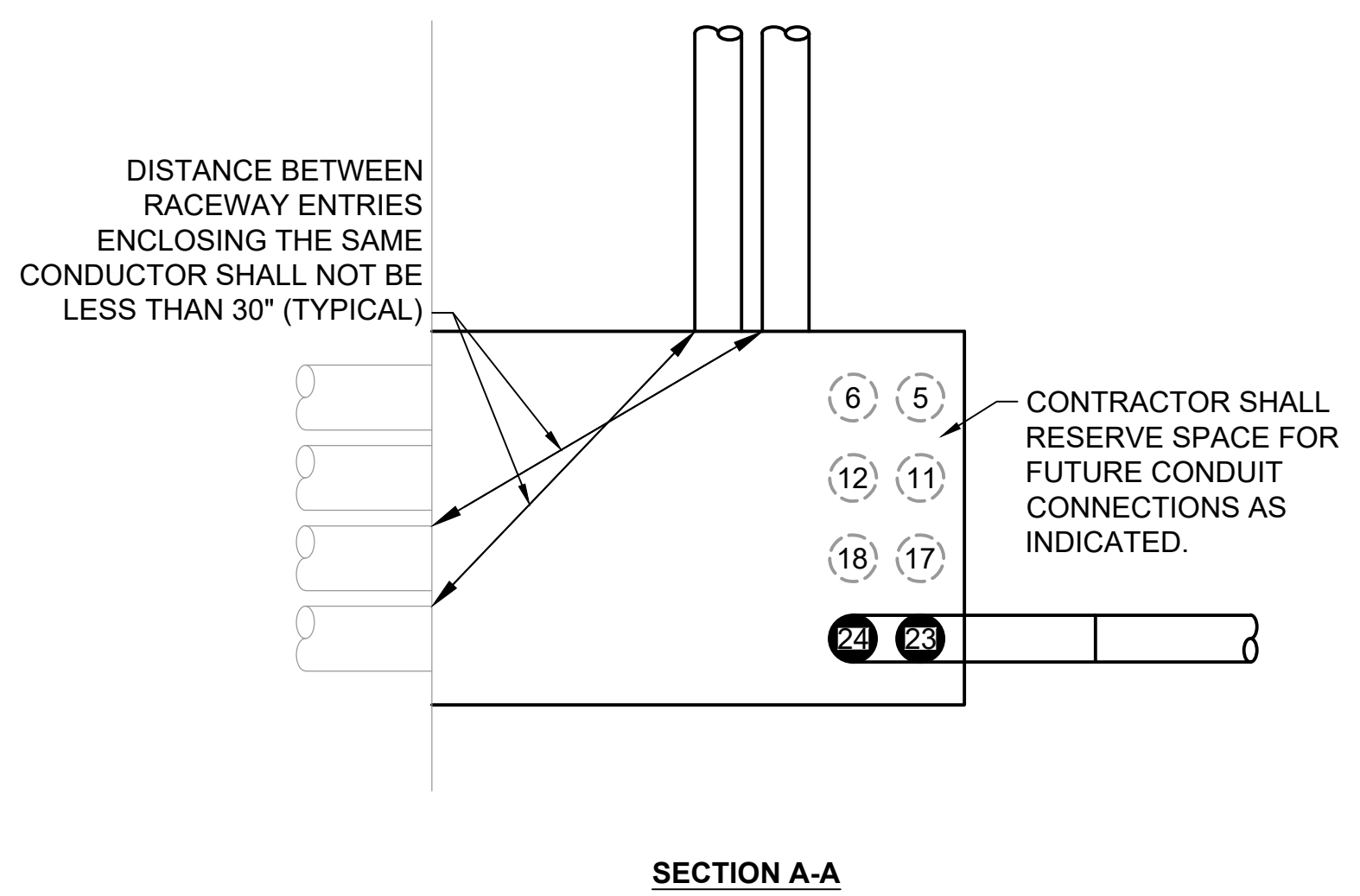
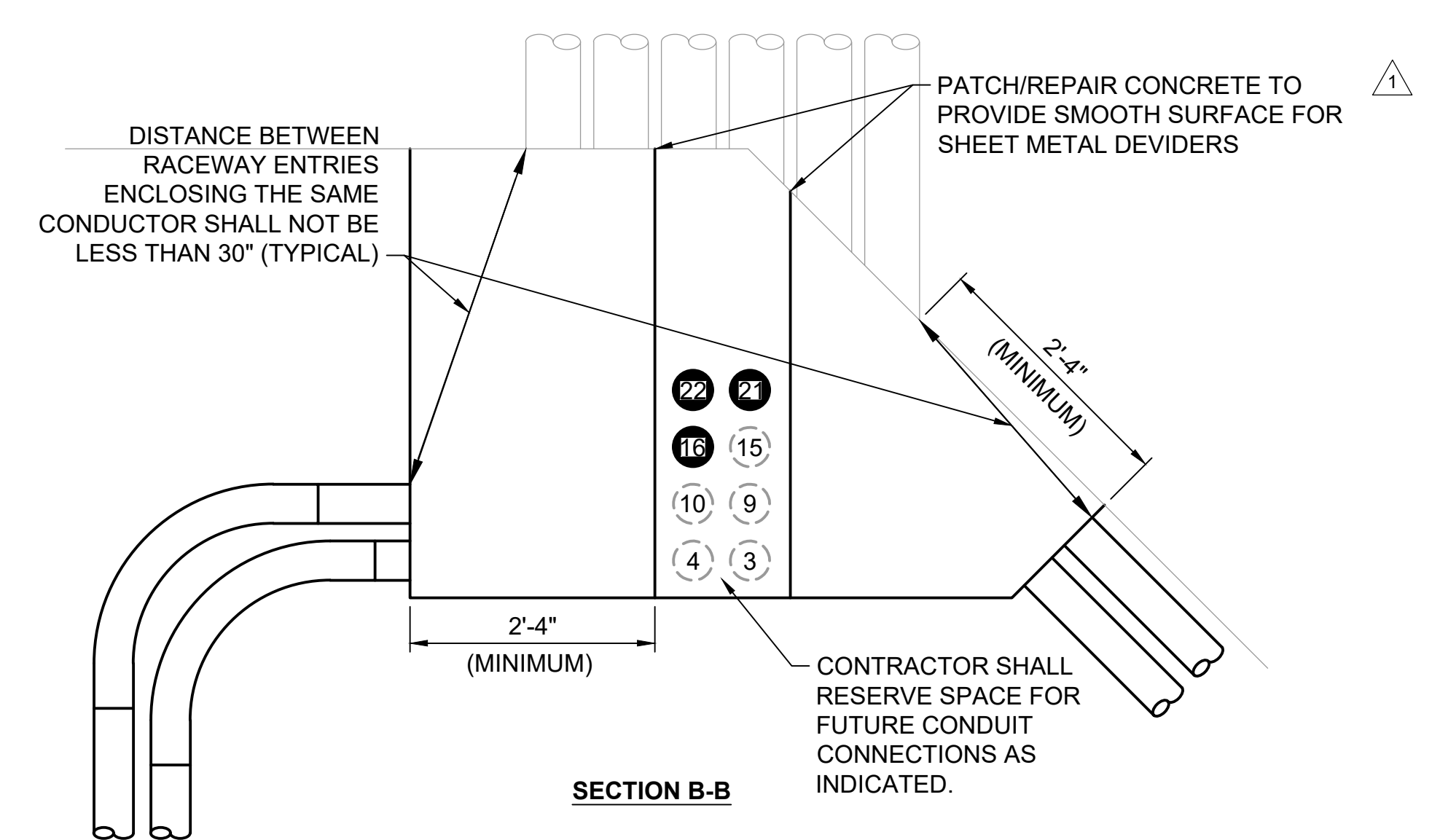
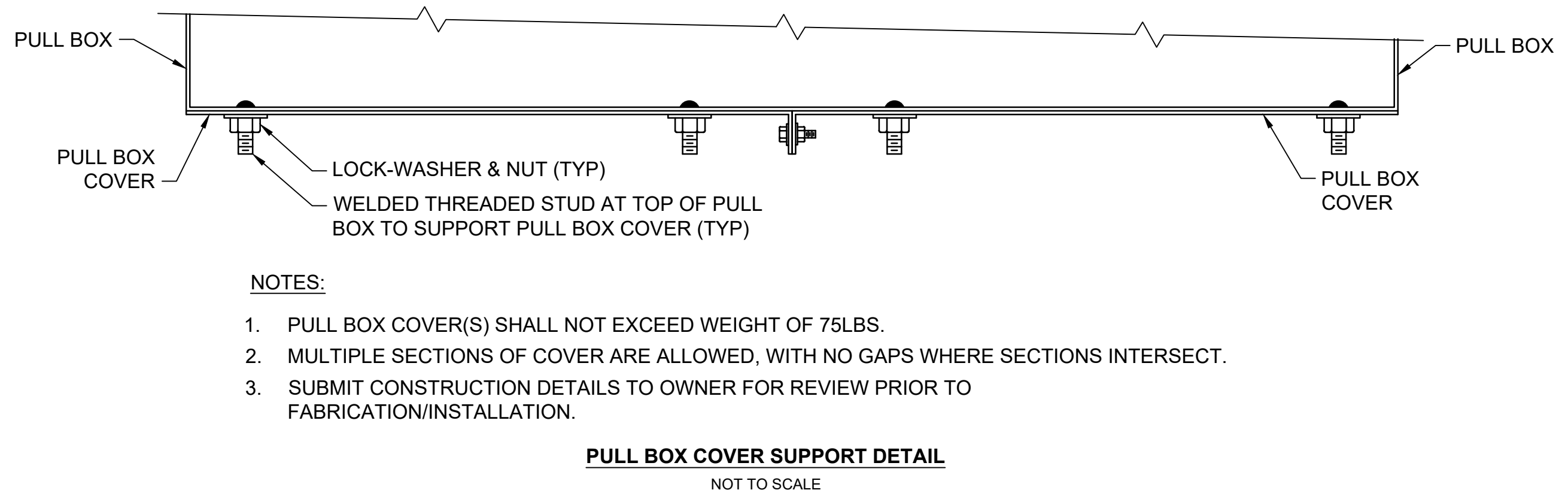
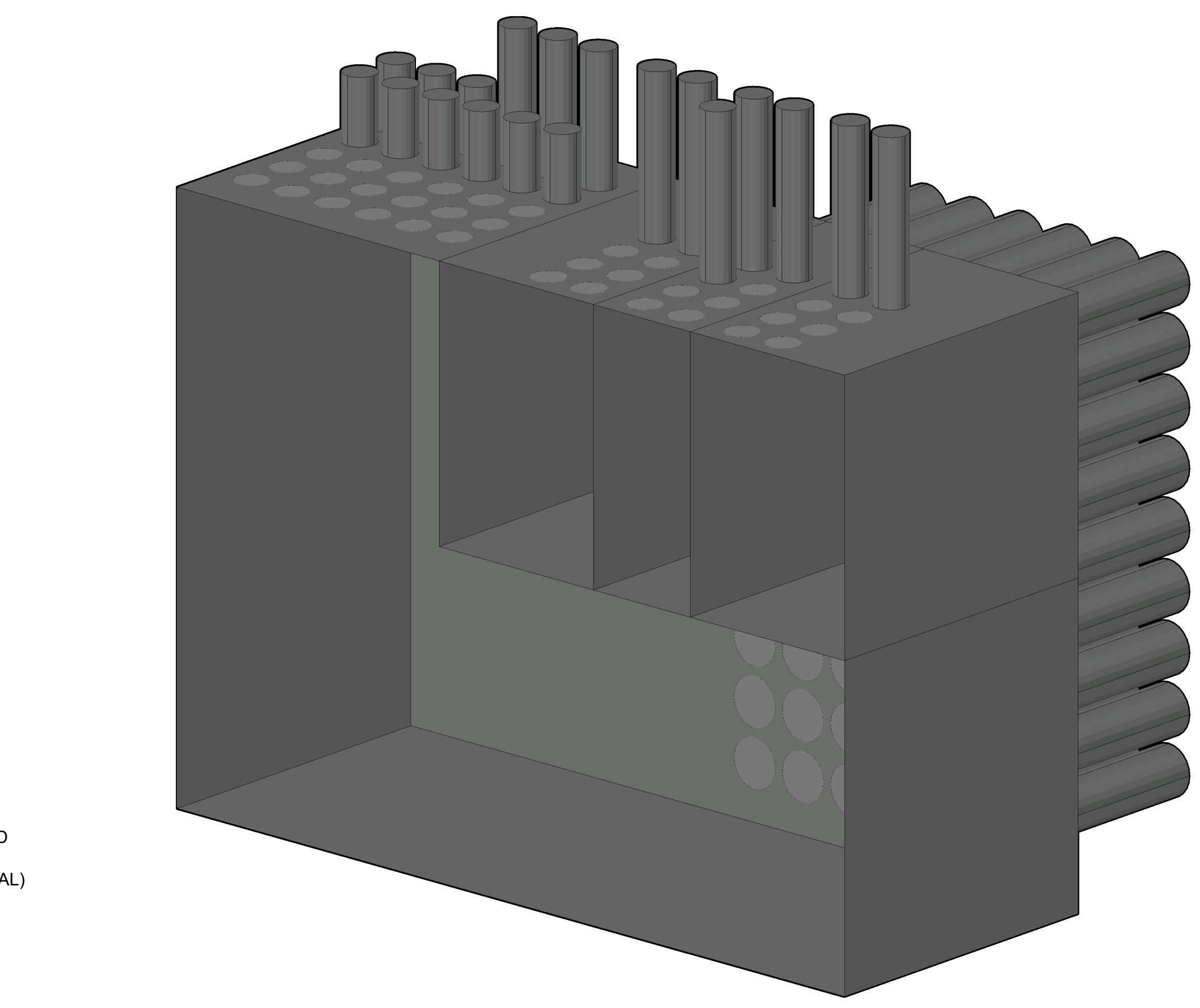
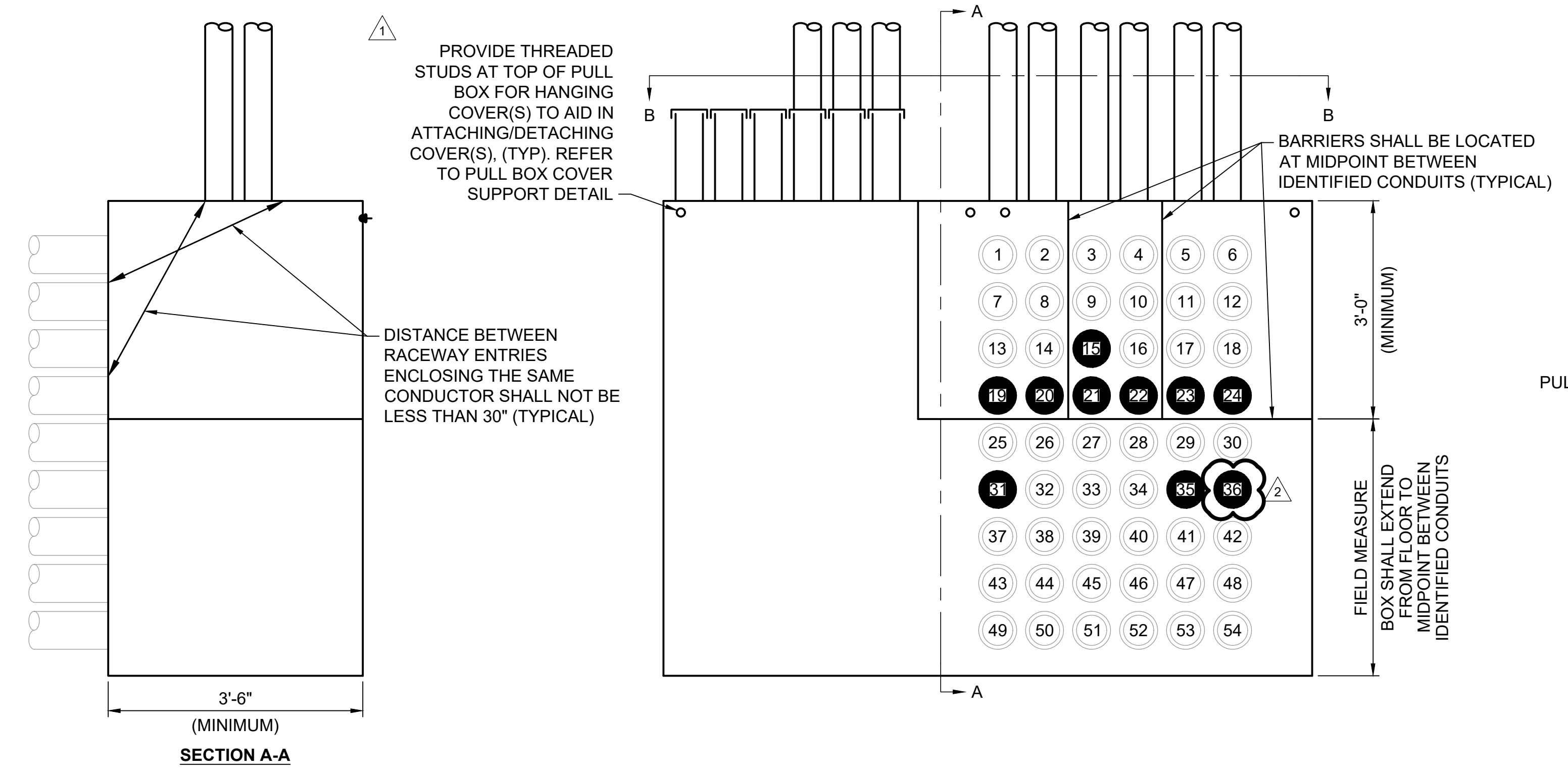
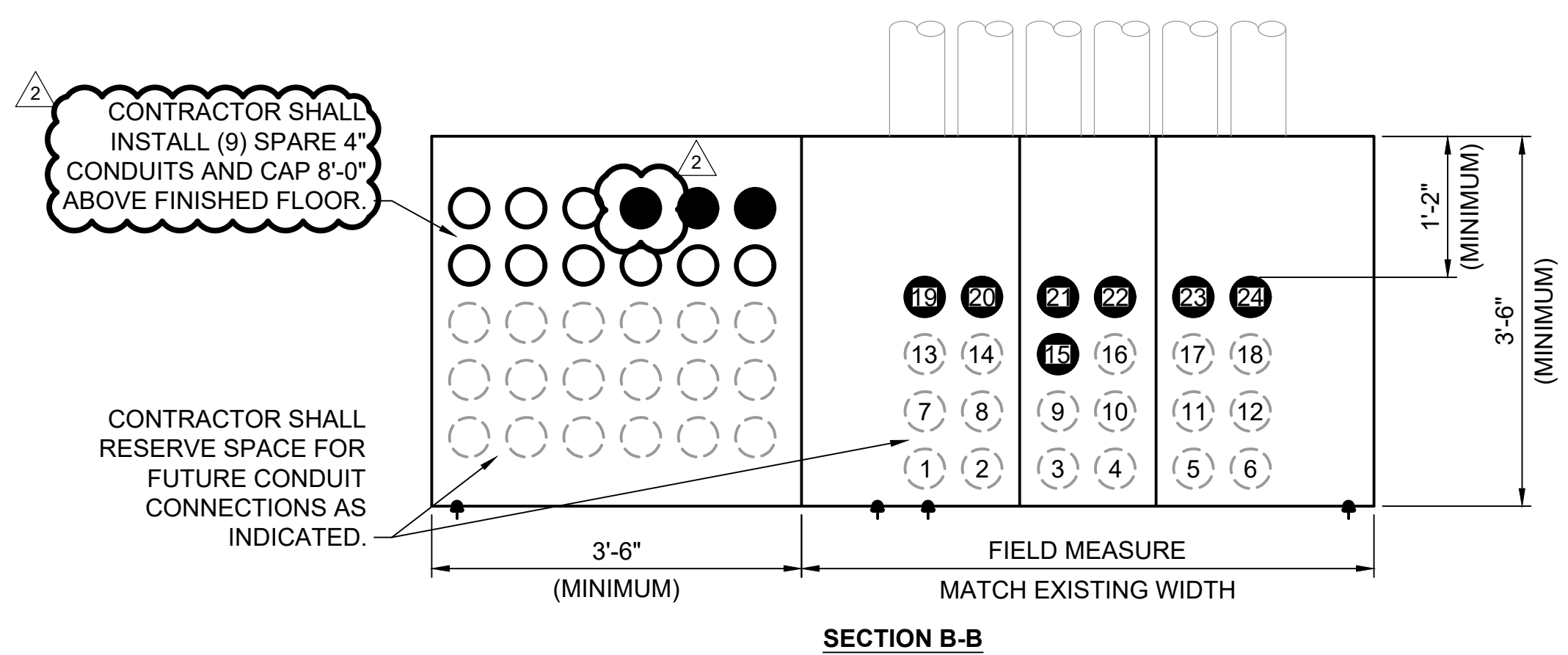
project	128966	contract	CP210961
drawing	E-503	rev.	2
sheet	of	of	of
file	128966	E-503.DWG	



REID E. DEBAUN
 PROFESSIONAL ENGINEER
 LICENSE NO. PE-200909323

GENERAL NOTES:
 1. PULL BOX SHALL MEET REQUIREMENTS OF NEC ARTICLE 314.

no.	date	by	ckd	description
0	07/09/21	JMC	RED	ISSUED FOR BID
1	08/12/21	JMC	RED	ADDENDUM #1
2	08/20/21	JMC	RED	ADDENDUM #3



REID E. DEBAUN
 PROFESSIONAL ENGINEER
 LICENSE NO. PE-200909323

BURNS & MCDONNELL
 9400 WARD PARKWAY
 KANSAS CITY, MO 64114
 816-333-9400
 LICENSEE NO. 000165

date	11/20/2020	detailed	J. CHASE
designed	R. DEBAUN	checked	R. DEBAUN



UNIVERSITY HOSPITAL
 UNIVERSITY OF MISSOURI HEALTH CARE
 COLUMBIA, MISSOURI

CCA & TH EMERGENCY
 POWER MODIFICATIONS
 ELECTRICAL DETAILS

project	128966	contract	CP210961
drawing	E-701	rev.	2
sheet	of	sheet	
file	128966	E-701.DWG	